



SAHRDAYA

COLLEGE OF ENGINEERING & TECHNOLOGY



Handbook

ACADEMIC YEAR 2021 - '22



SAHRDAYA

COLLEGE OF ENGINEERING & TECHNOLOGY

Kodakara, P.B.No. 17 , Thrissur (Dt), Kerala State ,India - 680684
Ph. 0480-2726630, 2759275 Fax: 0480-2726634 info@sahrdaya.ac.in www.sahrdaya.ac.in
Approved by AICTE
Affiliated to APJ Abdul Kalam Technological University
NAAC Accredited ISO 9001:2015 Certified
Accredited by The institution of Engineers (India)
UGC 2 (f) status Managed by Catholic Diocese of Irinjalakuda



FROM CHAIRMAN'S DESK

Sahrdaya's vision of education is the integral formation of the students to a wholesome human being transparent enough to transmit the light of God, the light that will dispel the darkness of sin and selfishness.

Glad to know that Sahrdaya Handbook is providing a catalogue of information which helps every Stakeholder of our institution. I hope you all will find it useful in your day-to-day college life. My dear young budding engineers, I wish and pray that you be blessed with every success and continue to shine in every aspect of your life.

Mar Pauly Kannookadan
Bishop of Irinjalakuda



FROM MANAGER'S DESK

This handbook is a document to provide information and will be a guide and help to all the Sahrdaya family members. I wish you the very best in all that you seek to do and will do our utmost to realize your goals and dreams.

A handwritten signature in black ink, appearing to read 'Msgr. Joy Paliakkara'.

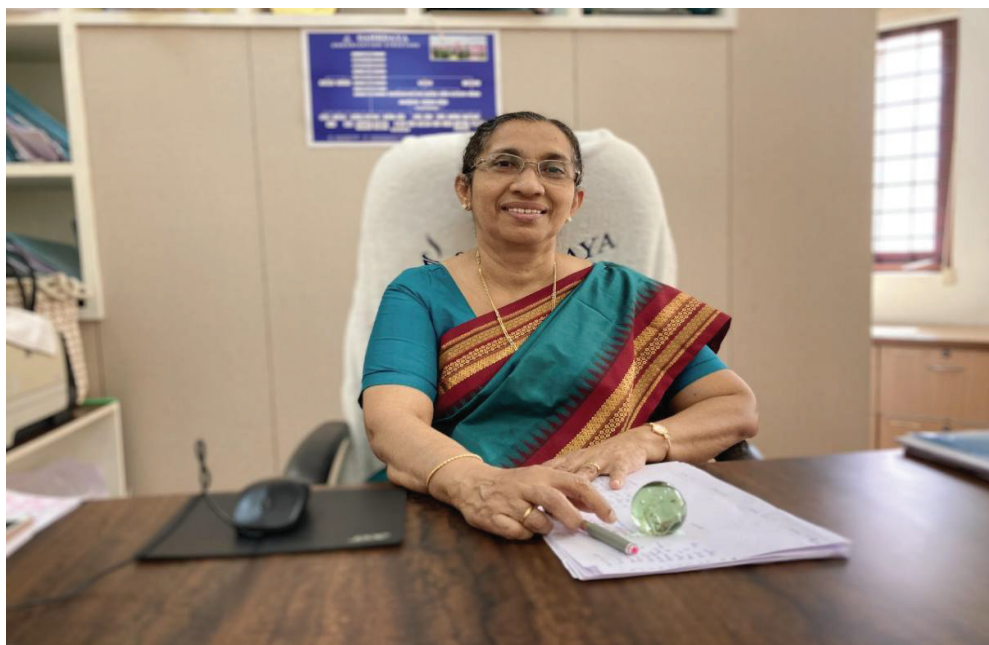
Msgr. Joy Paliakkara
Manager



FROM EXECUTIVE DIRECTOR'S DESK

The Sahrdaya Family takes pride in being a college where every aspiring student is into a leader who guides the youth to new vistas of progress. Giving back what we have, creates a virtuous cycle that makes everyone more successful. The college handbook will help all our stakeholders to understand our Vision and Mission. I wish that all our stakeholders will make the best use of this hand book. I wish all success.

Rev. Fr. George Pareman
Executive Director



FROM DIRECTOR'S DESK

This handbook will provide the students the opportunity to manage their pace of learning and to enable them to monitor their academic performance and progress as well as their involvement in co-curricular activities.

This handbook aims to give information of the policies and procedures pertaining to the college, on the code of conduct, discipline matters and other relevant information about the college and KTU university norms.

Wishing you a great academic year.

Dr. Elizabeth Elias
Director



FROM PRINCIPAL'S DESK

We are happy to welcome you all to our Sahrdaya family. The peaceful ambience, state of the art infrastructure and facilities ensure holistic development of students along with high levels of academic achievement. Each student has the potential to bring their enthusiasm and creativity into our college and add to the positive ethos that is part of our campus. We are privileged to live in one of the great places of the world and Sahrdaya College of Engineering and Technology seeks to give you an advantage that will help you make the world a better place. This handbook is designed to give you a frame of reference for the journey into the rich academic and social world of Sahrdaya College of Engineering & Technology.

Dr. Nixon Kuruvila
Principal



TABLE OF CONTENTS

	PAGE No.
1. INSTITUTIONAL INFORMATION	11
• 1.1 ABOUT US	
• 1.2 AFFILIATIONS AND ACCREDITATIONS	
• 1.3 OUR VISION	
• 1.4 OUR MISSION	
• 1.5 OUR QUALITY POLICY	
2. ORGANISATION STRUCTURE	13
3. MANAGEMENT	14
4. PROGRAMMES & DEPARTMENTS	18
• 4.1 POST GRADUATE PROGRAMMES	
• 4.2 UNDER GRADUATE PROGRAMMES	
• 4.3 DEPARTMENTS	
• 4.4 OTHERS	
5. ACADEMIC UNIQUENESS	20
6. MANAGEMENT & STAFF CONTACT DETAILS	22
• 6.1 MANAGEMENT	
• 6.2 Department: BIOMEDICAL Engineering	
• 6.3 Department: BIOTECHNOLOGY	
• 6.4 Department: CIVIL Engineering	
• 6.5 Department: COMPUTER SCIENCE & Engineering	
• 6.6 Department: ELECTRONICS & COMMUNICATION Engineering	
• 6.7 Department: ELECTRICAL & ELECTRONICS Engineering	
• 6.8 Department: APPLIED SCIENCE & HUMANITIES	
• 6.9 OFFICE	
• 6.10 LIBRARY STAFF	
• 6.11 TRANSPORTATION	
7. DEPARTMENT OF BIOMEDICAL ENGINEERING	32
• 7.1 VISION	
• 7.2 MISSION	
• 7.3 PROGRAM EDUCATIONAL OBJECTIVES	
• 7.4 PROGRAM SPECIFIC OUTCOMES	
• 7.5 DEPARTMENT INFRASTRUCTURE	
• 7.6 LABORATORIES	
• 7.7 DEPARTMENT LIBRARY	
• 7.8 TECHNICAL ASSOCIATION- EBSA	
• 7.9 DEPARTMENT ADVISORY COMMITTEE	



8. DEPARTMENT OF BIOTECHNOLOGY	35
• 8.1 VISION	
• 8.2 MISSION	
• 8.3 PROGRAM EDUCATIONAL OBJECTIVES	
• 8.4 PROGRAM SPECIFIC OUTCOMES	
• 8.5 DEPARTMENT INFRASTRUCTURE	
• 8.6 LABORATORIES	
• 8.7 DEPARTMENT LIBRARY	
• 8.8 TECHNICAL ASSOCIATION - BEATS	
• 8.9 DEPARTMENT ADVISORY COMMITTEE	
9. DEPARTMENT OF CIVIL ENGINEERING	39
• 9.1 VISION	
• 9.2 MISSION	
• 9.3 PROGRAM EDUCATIONAL OBJECTIVES	
• 9.4 PROGRAM SPECIFIC OUTCOMES	
• 9.5 DEPARTMENT INFRASTRUCTURE	
• 9.6 LABORATORIES	
• 9.7 DEPARTMENT LIBRARY	
• 9.8 TECHNICAL ASSOCIATION- PACE	
• 9.9 DEPARTMENT ADVISORY COMMITTEE	
10. DEPARTMENT OF COMPUTER SCIENCE ENGINEERING	42
• 10.1 VISION	
• 10.2 MISSION	
• 10.3 PROGRAM EDUCATIONAL OBJECTIVES	
• 10.4 PROGRAM SPECIFIC OUTCOMES	
• 10.5 DEPARTMENT INFRASTRUCTURE	
• 10.6 LABORATORIES	
• 10.7 DEPARTMENT LIBRARY	
• 10.8 TECHNICAL ASSOCIATION – ACES	
• 10.9 DEPARTMENT ADVISORY COMMITTEE	
11. DEPARTMENT OF ELECTRONICS & COMMUNICATION ENGINEERING	46
• 11.1 VISION	
• 11.2 MISSION	
• 11.3 PROGRAM EDUCATIONAL OBJECTIVES	
• 11.4 PROGRAM SPECIFIC OUTCOMES	
• 11.5 DEPARTMENT INFRASTRUCTURE	
• 11.6 LABORATORIES	
• 11.7 DEPARTMENT LIBRARY	
• 11.8 TECHNICAL ASSOCIATION- EMAGE	
• 11.9 DEPARTMENT ADVISORY COMMITTEE	



12. DEPARTMENT OF ELECTRICAL & ELECTRONICS ENGINEERING	49
• 12.1 VISION	
• 12.2 MISSION	
• 12.3 PROGRAM EDUCATIONAL OBJECTIVES	
• 12.4 PROGRAM SPECIFIC OUTCOMES	
• 12.5 DEPARTMENT INFRASTRUCTURE	
• 12.6 LABORATORIES	
• 12.7 DEPARTMENT LIBRARY	
• 12.8 TECHNICAL ASSOCIATION- AESON	
• 12.9 DEPARTMENT ADVISORY COMMITTEE	
13. DEPARTMENT OF APPLIED SCIENCE & HUMANITIES	52
• 13.1 LABORATORIES	
• 13.1.1 PHYSICS LAB	
• 13.1.2 CHEMISTRY LAB	
• 13.1.3 MECHANICAL WORKSHOP	
14. CENTRAL LIBRARY	53
• 14.1 LIBRARY REGULATIONS	
• 14.2 COVID PROTOCOL	
15. TRAINING AND PLACEMENT DEPARTMENT	55
16. PHYSICAL EDUCATION DEPARTMENT	58
• 16.1 SPORTS INFRASTRUCTURE	
• 16.2 LADIES HEALTH CLUB	
• 16.3 GENTS HEALTH CLUB	
17. NATIONAL SERVICE SCHEME	59
18. SPECIAL CENTERS OF SAHRDAYA	61
• 18.1 INTERNAL QUALITY ASSURANCE CELL (IQAC)	
• 18.2 INNOVATION & ENTREPRENEURSHIP DEVELOPMENT CENTER (IEDC)	
• 18.3 RESEARCH AND DEVELOPMENT CELL (RDC)	
• 18.4 INDUSTRY INSTITUTE INTERACTION CELL (IIC)	
• 18.5 ACADEMIC MANAGEMENT SYSTEM (AMS) (AUTOMATION)	
19. VARIOUS CLUBS OF SCET	67
• 19.1. Hardware Club	
• 19.2. Coders Club	
• 19.3. Creative Club	
• 19.4. Media Club	
• 19.5. Future Tech Club	
20. PROFESSIONAL BODIES	69
• 20.1 INSTITUTE OF ELECTRICAL AND ELECTRONICS ENGINEERS(IEEE)	
• 20.2 INDIAN SOCIETY FOR TECHNICAL EDUCATION(ISTE)	
• 20.3 THE INSTITUTION OF ENGINEERS (INDIA)(IEI)	
• 20.4 BIOMEDICAL ENGINEERING SOCIETY OF INDIA (BMESI)	
• 20.5 BIOTECH RESEARCH SOCIETY OF INDIA (BRSI)	
• 20.6 COMPUTER SOCIETY OF INDIA (CSI)	



21. SAHRDAYA COLLEGE OF ALUMNI ASSOCIATION(SECAA)	71
22. COLLEGE FACILITIES	72
• 22.1 WIFI CONNECTIVITY	
• 22.2 GREEN CAMPUS	
• 22.3 HOSTELS	
• 22.4 CAFETERIA/CANTEEN	
• 22.5 CHAPEL/ SPIRITUAL DEVELOPMENT	
• 22.6 ATM	
• 22.7 FITNESS CENTRE	
• 22.8 LANGUAGE LAB	
• 22.9 AUDITORIUM	
• 22.10 REPROGRAPHIC CENTRE	
• 22.11 COLLEGE BUS	
• 22.12 STAFF QUARTERS	
23. STUDENT SERVICE FACILITIES	74
• 23.1 ADVISORY SYSTEM	
• 23.2 COUNSELING FACILITY	
• 23.3 MEDICAL CONSULTATION	
• 23.4 YOGA	
• 23.5 EXTRA CURRICULAR ACTIVITIES	
• 23.6 COMMUNITY DEVELOPMENT PROGRAMME	
• 23.7 PARENT TEACHER WELL-WISHER ASSOCIATION	
• 23.8 ANTI-RAGGING CELL	
• 23.9 DISCIPLINARY COMMITTEE	
• 23.10 GRIEVANCE REDRESSAL & APPEALS COMMITTEE	
• 23.11 INTERNAL COMPLAINTS COMMITTEE	
• 23.12 STUDENT WELFARE COMMITTEE	
24. ADMINISTRATIVE COMMITTEES	77
25. SCHOLARSHIPS AND ENDOWMENTS	79
26. ADMISSION PROCEDURE	83
27. STUDENT GUIDELINES	85
28. UNIVERSITY REGULATIONS	86
• 28.1 ATTENDANCE	
• 28.2 ACADEMIC ASSESSMENT/ EVALUATION	
• 28.3 COMPREHENSIVE EXAMINATION	
• 28.4 SEMINAR	
• 28.5 DESIGN PROJECT	
• 28.6 FINAL SEMESTER PROJECT	
• 28.7 END SEMESTER EXAM	



29. COLLEGE ETIQUETTE	88
• 29.1 COLLEGE TIMINGS	
• 29.2 DRESS CODE	
• 29.3 MORNING ASSEMBLY/ANTHEM /PRAYER	
• 29.4 DISCIPLINE	
• 29.5 CONSERVE COLLEGE PROPERTY	
• 29.6 IDENTITY CARDS	
• 29.7 RAGGING	
• 29.8. COMPUTER LAB RULES	
• 29.9. GENERAL CODE OF CONDUCT	
30. HOSTEL RULES	91
31. SAHRDAYA ANTHEM	94



1. INSTITUTIONAL INFORMATION

1.1 ABOUT US

Sahrdaya College of Engineering & Technology was established in the year 2002 under Irinjalakuda Diocesan Educational Trust at Kodakara, Thrissur. The trust belongs to the Catholic Diocese of Irinjalakuda, a Christian (Syro-Malabar) minority community. The Registered Office of the Trust is located at Catholic Bishop's House, Irinjalakuda – 680121. The college has completed almost two decades in its functioning and has proven its excellence and achieved First Rank in pass percentage among all the Engineering colleges in the Kerala state, consistently for five consecutive years, under the University of Calicut. The 2015 -2019 batch is the first batch under KTU and has secured 14th rank in pass percentage among 143 Engineering colleges .

The environment in Sahrdaya paves way for an ideal learning ambience, providing exposure to different cultures and perspectives for fruitful and meaningful interactions. The inspired mindset of Sahrdaya helps to provide quality education and inculcate human values in students to embrace new challenges and seize new opportunities. Over 1800 student population and 200 plus staff represent a cross-section of the states demographic spectrum cutting across barriers of religion, caste, creed and gender.

The Campus is nestled in a wooded valley of 45 acres (18.2 hectares) end to end with landscaped expanses, breezy shadowy meadows, and crystal clear water bodies of varying sizes and shapes. The campus has its aesthetically planted orchards of Fruit laden trees and a well maintained Herbal Garden.

1.2 AFFILIATIONS AND ACCREDITATIONS

- Accredited by NAAC & ISO 9001: 2015 Certified
- UGC-2(f) status
- Recognized by AICTE, New Delhi
- Affiliated to APJ Abdul Kalam Technological University (KTU)
- Accredited by The Institution of Engineers (India)
- Awarded for Academic Excellence by University of Calicut (2014)
- Topper 1 college under Calicut University for five years (2009 to 2013)
- Awarded Swachh Campus award by University of Calicut (2015)

1.3 OUR VISION

Evolve as a leading technology institute to create high caliber leaders and innovators of global standing with strong ethical values to serve the industry and society.

1.4 OUR MISSION

- Provide quality technical education that transforms students to be knowledgeable, skilled, innovative and entrepreneurial professionals.
- Collaborate with academia and industry around the globe, to strengthen the education and research ecosystem.
- Practice and promote high standards of professional ethics, good discipline, high integrity and social accountability with a passion for scholastic excellence.



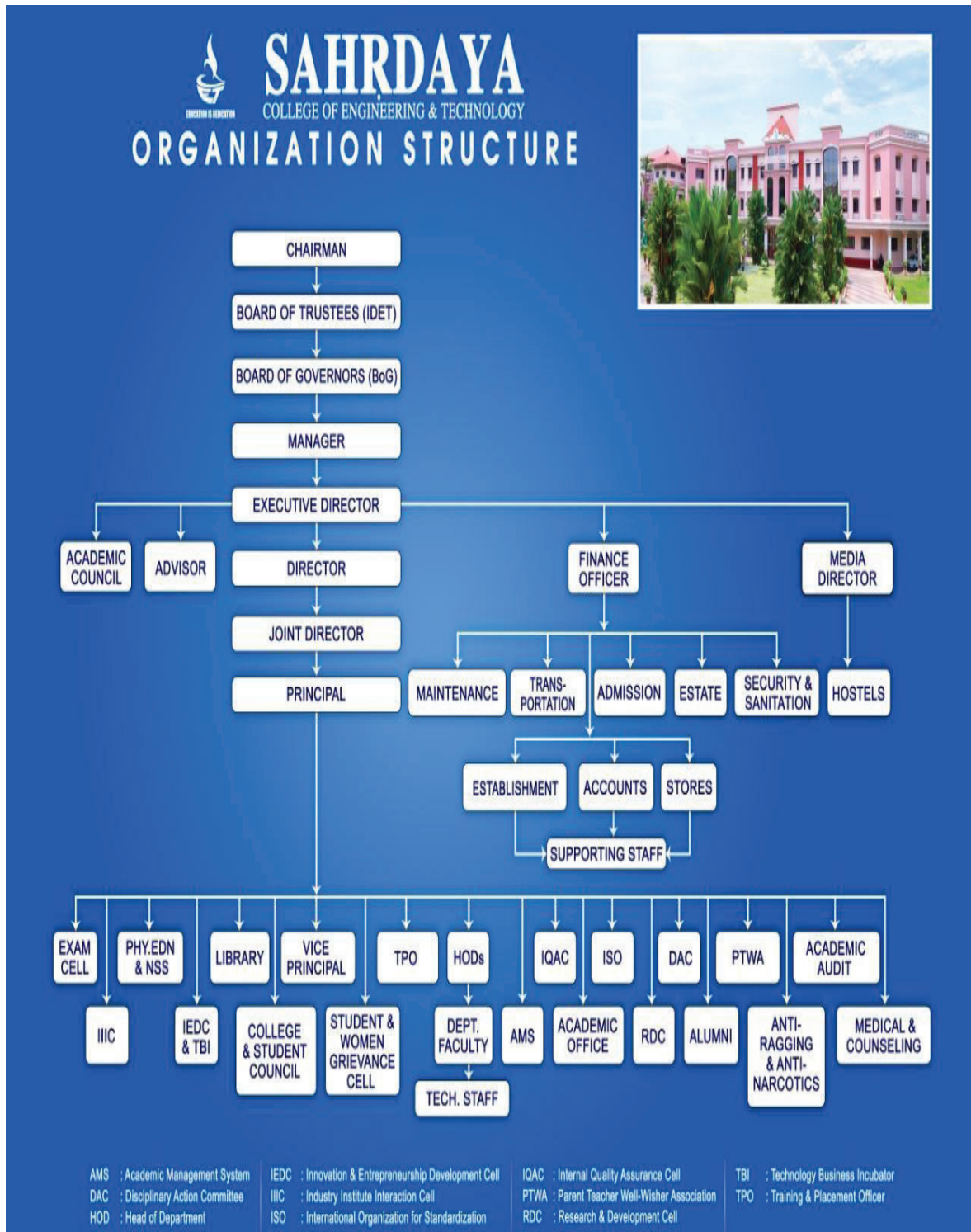
1.5 OUR QUALITYLICY

We at Sahrdaya are committed to provide Quality Technical Education through continual improvement and by inculcating Moral & Ethical values to mould into Vibrant Engineers with high Professional Standards.

We impart the best education through the support of competent & dedicated faculties, excellent infrastructure and collaboration with industries to create ambience of excellence.



2.ORGANISATION STRUCTURE





3. MANAGEMENT

CHAIRMAN



His Excellency **Mar PAULY KANNOOKADAN**
Bishop of Catholic Diocese of Irinjalakuda

MANAGER



V. Rev. Msgr. Joy Paliakkara,
Vicar General, Diocese Of Irinjalakuda

COLLEGE EXECUTIVE COMMITTEE



REV. FR. GEORGE PAREMAN
EXECUTIVE DIRECTOR



DR. ELIZABETH ELIAS
DIRECTOR



DR. SUDHA GEROG VALAVI
JOINT DIRECTOR



DR. NIXON KURUVILA
PRINCIPAL



DR. AJITH CHERIYAN
VICE PRINCIPAL



FR. JINTO VERAMPILAVU
FINANCE OFFICER



FR. CHACKO KATTUPARAMBIL
MEDIA DIRECTOR



BOARD OF TRUSTEES

1. His Excellency Mar PAULY KANNOOKADAN – Chairman, IDET
2. Msgr. JOY PALIAKKARA- Manager & President, IDET
3. Rev. Fr. GEORGE PAREMAN - Executive Director, SCET
4. Rev. Fr. VARGHESE ARICATT - Finance Officer, IDET
5. Rev. Fr. Dr. JOJO THODUPARAMBIL - Secretary, IDET
6. Rev. Fr. Dr. DAVIS CHENGINIYADAN - Executive Director, SCAS
7. Rev. Fr. JINTO VERAMPILAVIL - Finance Officer, SCET
8. Rev. Fr. SHAJUCHIRAYATH - Finance Officer, SCAS
9. Rev. Fr. NOUJIN VITHAYATHIL - Executive Director, Sahrdaya Tech.
10. Rev. Fr. Dr. JINO MALAKKARAN - Executive Director, SIMS
11. Rev. Fr. PIUS CHERAPPANATH - Trustee, IDET
12. Rev. Fr. LINTO THALIYANAYATH - Trustee, IDET



BOARD OF GOVERNORS

Name	Designation	Position
His Excellency Mar Pauly Kannookadan	Chairman, IDET	President
Msgr. Joy Paliakkara	Manager, SCET	Member
Rev. Fr. Varghese Aricat	Treasurer, IDET	Member
Rev. Fr. George Pareman	Executive Director, SCET	Member
Rev. Fr. Jinto Verampilavil	Finance officer, SCET	Member
Prof. K. T. Joseph	Advisor, SCET	Member
Dr. Elizabeth Elias	Director, SCET	Member
Dr. Sudha George Valavi	Professor, SCET	Member
Dr. Dhanya Gangadharan	Professor, SCET	Member
Dr. Prasad Krishna	Director NIT, Calicut	Member
Dr. P. Kuncheria Isaac	Educationist (VC, HITS, Chennai)	Member
Dr. M S Jayadeva	Educationist (Retd Principal/Director, SCET)	Member
Mr. Dinesh P Thampi	Vice President & Branch Head, TCS	Member
Ms. Meena Thomas	Director & COO, Agappe Diagnostics Ltd.	Member
Dr. Merina Benny	Industrialist (GM, Arjuna Natural Extracts, Aluva)	Member
Mr. Christo George	Industrialist (MD, Hykon, Thrissur)	Member
Dr. N Sajikumar	KTU Nominee	Member
Nominee Representative of State Government	Not received nominations from State Govt	Member
Dr. Nixon Kuruvila	Secretary	Member Secretary



ACADEMIC COUNCIL MEMBERS

Name of the Members	Designation & Organization
His Excellency Mar Pauly Kannookadan	Chairman, IDET
Msgr. Joy Paliakkara	Manager, SCET
Rev. Fr. George Pareman	Executive Director, SCET
Rev. Fr. Jinto Verampilavil	Finance officer, SCET
Dr. E Gopinathan	Former Director, NITC
Dr. H D Maheshappa	Professor, Dept. ECE, Acharya Institute of Tech., Bangalore
Dr. Lillykutty Jacob	Professor, Dept. of ECE, NITC
Dr. Elizabeth Elias	Director, SCET
Prof. K T Joseph	Advisor, SCET
Dr. Sudha George Valavi	Joint Director, SCET
Dr. Nixon Kuruvila	Principal, SCET
Prof.(Dr)E.D. Jemmis	Retd.Professor,IISc,Bangalore
Mr. Suresh Kumar Kottarath	Group Manager, Human Resources, IBS
Mr. George Oommen	Manager- People & Culture, SOTI
Dr Vineeth Kumar Paleri	Professor, Dept. of CSE, NITC
Dr. Katta Venkataramana	Professor, Dept. of CE, NIT Surathkal



4. PROGRAMMES & DEPARTMENTS

4.1 DOCTORAL PROGRAMMES (Ph.D)

- Biotechnology
- Computer Science & Engineering
- Electronics & Communication
- Biomedical Engineering
- Electronics & Communication Engineering
- Electrical & Electronics Engineering
- Chemistry

4.2 POST GRADUATE PROGRAMMES

- Embedded Systems 6
- Industrial Biotechnology 6
- Computer Science and Engineering 6

4.3 UNDER GRADUATE PROGRAMMES

- Biomedical Engineering 60
- Biotechnology 60
- Civil Engineering 60
- Computer Science and Engineering 120
- Electronics and Communication Engineering 60
- Electrical and Electronics Engineering 30

4.4 DEPARTMENTS

- Dept of Biomedical Engineering
- Dept of Biotechnology
- Dept of Civil Engineering
- Dept of Computer Science & Engineering
- Dept of Electronics & Communication Engineering



- Dept of Electrical & Electronics Engineering
- Dept of Applied Science & Humanities

4.5 OTHERS

- Training & Placement Department
- Central Library
- Physical Education Department
- IQAC (Internal Quality Assurance Cell)
- RDC (Research & Development Centre)
- IIIC (Industry Institute Interaction Cell)
- IEDC (Innovation & Entrepreneurship Development Cell)



5. ACADEMIC UNIQUENESS

- Outcome Based Education (OBE) system
- Advisory System
- Comprehensive LMS (Learning Management System), in compliance with NBA & ABET standards
- Modern Blended Learning with emphasis on PBL (Project Based Learning) and flipped learning concepts
- Academic Calendar, Course Plan, Teacher Hand Book to ensure compliance of course plan, Daily teacher and learner work reports
- Monthly Reports
- Periodic External & Internal Academic Audit
- Documentation compliance with ISO standards
- Outcome attainments are periodically measured and documented
- Add-on courses, Tutorial sessions, Skill development programs
- Industry oriented training sessions
- Feedback mechanisms from all stakeholders.
- Assessment & Evaluation for Continuous Improvement
- Result analysis of Internal tests and University Exam Results
- Student's academic support system - S4S & T4S
- Induction programs and Remedial classes
- Regular Career Development Programs
- Placement & Training programs
- Sessions for Higher studies , GATE & IELTS / BEC
- Innovation and Entrepreneurship Development Cell Activities
- Language Lab & Spoken English classes
- Weekly Yoga sessions & Campus chapel
- Study Group Activity



- Full Fledged Library
- NSS Units, Technical Associations and General Club activities
- Three Professional Counselors and a Doctor
- First College in Kerala with an Engineering Design Studio
- Scholarship for Meritorious and economically backward students.
- Yearly Endowments to faculty and students excellence.
- Regular Faculty Development Programs



6. MANAGEMENT & STAFF CONTACT DETAILS

6.1 MANAGEMENT

NAME	Designation	Contact No.	EMAIL ID
His Excellency Bishop Mar. Pauly Kannookadan	Chairman	0480-2826820	
Msgr. Joy Paliakkara	Manager	9447921092	manager@sahrdaya.ac.in
Rev.Fr. George Pareman	Executive Director	9447529752	exedirector@sahrdaya.ac.in
Rev. Fr. Jinto	Finance Officer	8289847600	fnofficer@sahrdaya.ac.in
Prof. K T Joseph	Advisor	9447225599	advisor@sahrdaya.ac.in
Dr. Elizabeth Elias	Director	9447949205	director@sahrdaya.ac.in
Dr. Sudha George Valavi	Joint Director	9495420548	jointdirector@sahrdaya.ac.in
Dr. Nixon Kuruvila	Principal	9446229344	principal@sahrdaya.ac.in
Dr. Ajith Cherian	Vice Principal & HoD ASH	8891230081	hodash@sahrdaya.ac.in
Rev.Fr. Chacko Kattuparambil	Media Director	9349802563	mediadirector@sahrdaya.ac.in

6.2 Department: BIOMEDICAL Engineering

Name	Mobile	Email
Dr. Finto Raphel (HoD)	9995078358	finto@sahrdaya.ac.in, hodbme@sahrdaya.ac.in
Ann Soniya M Micheal	9495421380	annsoniya@sahrdaya.ac.in
Dr. Jeethu Raveendran	8122283477	jeethuraveendran@sahrdaya.ac.in
Dr. Remya George	9020909020	remyageorge@sahrdaya.ac.in
Jibin Jose	9946983296	jibinjose@sahrdaya.ac.in



<i>Name</i>	<i>Mobile</i>	<i>Email</i>
Dr. Finto Raphel (HoD)	9995078358	finto@sahrdaya.ac.in, hodbme@sahrdaya.ac.in
Jis Paul	9995547018	jispaul@sahrdaya.ac.in
Kiran Philip Isaac	9744932274	kiranphilip@sahrdaya.ac.in
Reshma Jose	9745718820	reshmajose@sahrdaya.ac.in
Sony N	9995132042	sonyns@sahrdaya.ac.in
Supriya Mary Sunil	8281865248	supriymary@sahrdaya.ac.in
Lavina Joseph	8714492871	lavina@sahrdaya.ac.in
Arathi MM	7560946962	arathy@sahrdaya.ac.in

6.3 Department: BIOTECHNOLOGY

<i>Name</i>	<i>Mobile</i>	<i>Email</i>
Dr. Ambili Mechoor (HoD)	9495051696	ambili@sahrdaya.ac.in hodbte@sahrdaya.ac.in
Dr. Amitha Joy	8848254724	amitha@sahrdaya.ac.in
Dr. Dhanya Gangadharan	9539417734	dhanyag@sahrdaya.ac.in
Dr. Midhila Padman	8281072101	midhila@sahrdaya.ac.in
Dr .Uma Krishnakumar	9495504281	umakrishnakumar@sahrdaya.ac.in
Francis John V	9447720797	francisjohnv@sahrdaya.ac.in
Marria. C Cyriac	8547331804	marriac.cyriac@sahrdaya.ac.in
P Praveena	8589898963	ppraveena@sahrdaya.ac.in
Ranimol G	9995387413	ranimolg@sahrdaya.ac.in
Salini P J	8281104128	salinipj@sahrdaya.ac.in
Smeera Thomas	9447488702	smeerathomas@sahrdaya.ac.in
Dr. Leon Ittiachen	9846033233	leon@sahrdaya.ac.in

**6.4 Department: CIVIL Engineering**

<i>Name</i>	<i>Mobile</i>	<i>Email</i>
Dr.Drися M (HoD)	7034838036	hodce@sahrdaya.ac.in
Prof. Sunny C P	9446230027	sunnycp@sahrdaya.ac.in
Aiswarya M S	9645167445	aiswaryams@sahrdaya.ac.in
Dr. T. Zacharia Varghese	9447300858	zachvarg@sahrdaya.ac.in
Ragi C Ravindran	8593932296	ragicr@sahrdaya.ac.in
Remya P M	9745849470	remyapm@sahrdaya.ac.in
Reshma Antony	9495552618	reshmaantony@sahrdaya.ac.in
Sujana R	9497193250	sujana@sahrdaya.ac.in
Akhil S Nair	7902335954	akhil@sahrdaya.ac.in
Ciby Jacob Cherian	9496330997	cibyjacob@sahrdaya.ac.in
Haritha C R	9895914622	haritha@sahrdaya.ac.in

6.5 Department: COMPUTER SCIENCE & Engineering

<i>Name</i>	<i>Mobile</i>	<i>Email</i>
Dr. R Satheesh Kumar (HoD)	9895344143	satheeshkumar@sahrdaya.ac.in hodcsc@sahrdaya.ac.in
Anila Thomas	9895772500	anilathomas@sahrdaya.ac.in
Ann Rija Paul	8281081460	annrijapaul@sahrdaya.ac.in
Anly Antony	9496096815	anlyantony@sahrdaya.ac.in>
Anusree K	8943568877	anusreek@sahrdaya.ac.in
Deepa Devassy	9847786745	deepadevassy@sahrdaya.ac.in
Divya R	9947913657	divyar@sahrdaya.ac.in
Elsa Raju A	9495851368	elsa@sahrdaya.ac.in



<i>Name</i>	<i>Mobile</i>	<i>Email</i>
Dr. R Satheesh Kumar (HoD)	9895344143	satheeshkumar@sahrdaya.ac.in hodcsc@sahrdaya.ac.in
Dr. R. Sunder	9943142754	sunder@sahrdaya.ac.in
Dr. Krishnadas J	9447467137	krishnadasj@sahrdaya.ac.in
Jasmy Davies	9447307770	jasmidavis@sahrdaya.ac.in
Lakshmi M B	9495420548	lakshmimb@sahrdaya.ac.in
Linnet Tomy	9400789446	linnettommy@sahrdaya.ac.in
Livya George	8281987286	livyageorge@sahrdaya.ac.in
Priya K V	8113980442	priyakov@sahrdaya.ac.in
Roshni R Menon	8129873015	roshnirmenon@sahrdaya.ac.in
Scaria Alex	9446447763	scariaalex@sahrdaya.ac.in
Shyam Krishna K	9497661728	shyamkrishna@sahrdaya.ac.in
Sreetha E S	9567039295	sreethaes@sahrdaya.ac.in
Uma E S	9562916682	umaes@sahrdaya.ac.in
Willson Joseph C	9600374739	willsonjoseph@sahrdaya.ac.in
Princy T D	9947085529	princy@sahrdaya.ac.in
Megha K K	8590443292	megha@sahrdaya.ac.in

6.6 Department: ELECTRONICS & COMMUNICATION Engineering

<i>Name</i>	<i>Mobile</i>	<i>Email</i>
Dr. Vishnu Rajan (HoD)	8113997771	vishnurajan@sahrdaya.ac.in hodece@sahrdaya.ac.in
Ambily Francis	9446078024	ambilyfrancis@sahrdaya.ac.in
Anju Babu	9400422301	anjubabu@sahrdaya.ac.in
Dr.Arun Thomas	9497282788	arunthomas@sahrdaya.ac.in



<i>Name</i>	<i>Mobile</i>	<i>Email</i>
Dr. Vishnu Rajan (HoD)	8113997771	vishnurajan@sahrdaya.ac.in hodece@sahrdaya.ac.in
Binet Rose Devassy	9995516894	binetrose@sahrdaya.ac.in

Chinchu Jose	9496462748	chinchujose@sahrdaya.ac.in
Deepak Joseph Babu	9961443764	deepakjoseph@sahrdaya.ac.in
Dr. K.R. Joy	8281918668	krjoy@sahrdaya.ac.in
Dr.G.R.Gnana King	9488883786	gnanaking@sahrdaya.ac.in
Jisha Jacob	9400738068	jishajacob@sahrdaya.ac.in
Priyanka Menon A S	9745317173	priyanka@sahrdaya.ac.in
Santhosh Kumar M S	9446287804	santhoshkumarms@sahrdaya.ac.in
Saran K B	9447536688	sarankb@sahrdaya.ac.in
Dr. Silpa P A	9544113016	silpapa@sahrdaya.ac.in
Vidyamol K	8547856561	vidyamolk@sahrdaya.ac.in

6.7 Department: ELECTRICAL & ELECTRONICS Engineering

<i>Name</i>	<i>Mobile</i>	<i>Email</i>
Dr.V.Vijikala (HoD)	7598354409	vijikalav@sahrdaya.ac.in
Abhijith R Prasad	9539926348	abhijith@sahrdaya.ac.in
Adarsh S R	8547101865	adarsh@sahrdaya.ac.in
Ashna Mohan	9496339157	ashnamohan@sahrdaya.ac.in
Drisy K Sasi	8281968939	drisyaksasi@sahrdaya.ac.in
Merry Mathew Padayattil	9496462820	merrymathew@sahrdaya.ac.in



Neethu John	9497366252	neethujohn@sahrdaya.ac.in
Sebin Davis K	9895590520	sebindavis@sahrdaya.ac.in

6.8 Department: APPLIED SCIENCE & HUMANITIES

<i>Name</i>	<i>Mobile</i>	<i>Email</i>
Dr.Nixon Kuruvila	9446229344	prinicipal@sahrdaya.ac.in
Dr.Sudha George Valavi	9495420548	jointdirector@sahrdaya.ac.in
Dr.Ajith Cherian John	8891230081	vice prinicipal@sahrdaya.ac.in
Jemcy Antony	9497624061	jemcyantony@sahrdaya.ac.in
Lickny I	9847470560	L icknyi@sahrdaya.ac.in
Rani Thomas	8547940457	ranithomas@sahrdaya.ac.in
Savitha P Paul	9895075595	savithapaul@sahrdaya.ac.in
Swapna Joseph	9497627157	swapnajoseph@sahrdaya.ac.in
Jasmine Johny	9656412175	jasminejohny@sahrdaya.ac.in
Jimi. K. J.	9495854716	jimisibin@sahrdaya.ac.in
Dr. Sukhila Krishnan	7894185296	sukhila@sahrdaya.ac.in
Anoop Lonappan	9567712379	anoopl lonappan@sahrdaya.ac.in
Mathews Vellarayil John	9387100715	mathewsvj@sahrdaya.ac.in
Vini Valsan	9400599346	vinivalson@sahrdaya.ac.in
T. Balakrishnan	9446800119	balakrishnan@sahrdaya.ac.in
Vini Jose	9846023598	hr@sahrdaya.ac.in

6.9 OFFICE

<i>Name</i>	<i>Mobile</i>	<i>Email</i>
Daisy Paulson	9745756541	daisypaulson@sahrdaya.ac.in
Honey M L	9497072509	honeyml@sahrdaya.ac.in
Krishnadas K	9633303913	krishnadask@sahrdaya.ac.in
M A Paulson	9446722380	mapaulson@sahrdaya.ac.in



Pauly P V	9633256524	paulypv@sahrdaya.ac.in
Raji Rajan	9446027373	rajirajan@sahrdaya.ac.in
Ragi Joshi	9946832509	ragijoshi@sahrdaya.ac.in
Reena Roy	9745033024	reenaroy@sahrdaya.ac.in
Rekha Anilan	9495133097	frontoffice@sahardaya.ac.in
Rimi Sunny	9497712997	rimisunny@sahrdaya.ac.in
Sheenu Sivaraj	9846684410	sheenusivaraj@sahrdaya.ac.in
Sugama Ranjith	9048374860	sugama@sahrdaya.ac.in

6.10 LIBRARY STAFF

Antu.T.C	9497155949	antutc@sahrdaya.ac.in
Jisha Davis	9746458223	jishajijoy@sahrdaya.ac.in
Manoj George	9447615178	manojgeorge@sahrdaya.ac.in
Sreedevi Sandheep	8086576439	sreedewis@sahrdaya.ac.in
Nicy Jose P	8111828285	nicy@sahrdaya.ac.in
Santhini. P.S	9447405331	santhinips@sahrdaya.ac.in
BM		
Abhilash C M	8848941694	abhilashcm@sahrdaya.ac.in
Nimitha P M	9744297807	nimithapm@sahrdaya.ac.in
Milia Vincent	7025889732	miliavincent@sahrdaya.ac.in
BT		
Chikkumol Velayudhan	8606229696	chikkumol@sahrdaya.ac.in
Chonat Ambili Sasidharan	9747160232	cambili@sahrdaya.ac.in
Naina C M	9539528077	nainacm@sahrdaya.ac.in
Vidhya C Joseph	9846599835	vidhyacjoseph@sahrdaya.ac.in
CE		
Mini K F	9496834729	minikf@sahrdaya. ac.in
Ritta Thomas	8592885298	rittathomas@sahrdaya.ac.in



Varghese P T	9847195077	varghesept@sahrdaya.ac.in
CS		
Aljo Joseph (System Admin)	9846867215	aljojosephk@sahrdaya.ac.in
Arunesh M R	8592050611	arunesh@sahrdaya.ac.in
Gokul Ajith	9745642364	gokul@sahrdaya.ac.in
Jain Joy	8589969776	jain@sahrdaya.ac.in
EC		
Gisha C.G	9747417641	gishacg@sahrdaya.ac.in
Sumam M K	9496245421	sumammk@sahrdaya.ac.in
EE		
Jency T G	9567143680	jencytg@sahrdaya.ac.in
Shincy Leo	8606338832	shincyleo@sahrdaya.ac.in
Smitha U S	9744673595	smithaus@sahrdaya.ac.in
Chemistry		
Anu Pramod	8111972455	anupramod@sahrdaya.ac.in
Mechanical		
Aashik P Pankaj	9789215689	ashikpp@sahrdaya.ac.in
Antony Jeslin Pinheiro	9497375771	antonyjeslin@sahrdaya.ac.in

6.11 TRANSPORTATION

<i>Name</i>	<i>Mobile</i>	<i>Email</i>
Anto M O	9995226173	antomo@sahrdaya.ac.in
Biju T.M	8113086037	bijutm@sahrdaya.ac.in
Evin Antony	9746009756	evinantony@sahrdaya.ac.in
Sijo C D	9895311210	sijocd@sahrdaya.ac.in
Vipin Wilson	9544346007	vipinwilson@sahrdaya.ac.in



Maintenance		
<i>Name</i>	<i>Mobile</i>	<i>Email</i>
Muralikrishnan M	7012136745	
Midhun.P.S	984678008	midhu@sahrdaya.ac.in
Sajitha	9048816232	sajitha@sahrdaya.ac.in
Jipson M V	8589970212	
Security		
Suresh P R	7012737656	
Joseph M D	8129359821	
Ramachandran K K	8156822731	
Shaji M C	9497272376	
Baby M A	9349950771	
Gents Hostel Warden		
Rev.Fr. Chacko Kattuparambil	9349802563	
Ladies Hostel Warden		
Sr. Remy James	9495563190	srremy@sahrdaya.ac.in
Sr. Maria John	8412996835	srmaria@sahrdaya.ac.in
Sr. Shynamma	9497624972	srshynamma@sahrdaya.ac.in
Sr. Bindhu Joseph	9947732460	
Counsellors / Doctor / Yoga Trainer		
Babu K F - Counsellor	9447513402	babu@sahrdaya.ac.in
Elsy Babu - Counsellor	9447513402	elsy@sahrdaya.ac.in
Dr.Sr.Rita - Doctor	9495634814	drrita@sahrdaya.ac.in
Dr.Sr.Ancy – Yoga Trainer	9946050250	drancy@sahrdaya.ac.in



DEPARTMENTS AT A GLANCE



7. DEPARTMENT OF BIOMEDICAL ENGINEERING

7.1 VISION

Emerge as a pioneer in biomedical engineering for providing affordable and accessible biomedical technology

7.2 MISSION

- ◆ Nurture high caliber biomedical professionals by integrating science, mathematics, engineering and medicine through quality education with excellent faculty and infrastructure.
- ◆ Facilitate extensive hands-on training, interdisciplinary research and innovations by collaborating with medical and industrial experts.
- ◆ Encourage graduates to be socially and ethically responsible biomedical engineers for the betterment of society.

7.3 PROGRAM EDUCATIONAL OBJECTIVES

On successful completion of the Program, our Graduates are expected to:

PEO 1	Establish the graduates as creative professionals in design, manufacturing, research and testing of biomedical devices ensuring quality and patient-safety.
PEO 2	Pursue advanced courses in biomedical engineering at par with evolving state-of-the-art technologies.
PEO 3	Evolve as successful engineers, entrepreneurs and inspirational leaders in society with moral ethical values.
PEO 4	Engage in continuous learning through professional development and collaborations to nurture future generations of biomedical professionals.

7.4 PROGRAM SPECIFIC OUTCOMES

PSO 1	Apply knowledge of STEM (Science, Technology, Engineering & Mathematics), modern tools and skills to propose ideas and solutions, culminating into a technology or equipment in health care system.
PSO 2	Work professionally and continue learning in multidisciplinary areas of biomedical engineering through research and innovation.



7.5 DEPARTMENT INFRASTRUCTURE

SL. No	Facility	Seating Capacity	No
1	Classrooms	70	3
2	Tutorial Room	70	1
3	Seminar Hall	140	1
4	Staff Cabin	-	12
5	HOD Room	-	1

The aesthetically designed multimedia equipped well-ventilated classrooms, tutorial and Seminar hall with an ambiance conducive for learning, lectures and presentations are available in the Department.

7.6 LABORATORIES

All laboratories are equipped with modern equipment and instruments and state-of-the-art infrastructure to gain knowledge through practice.

- GE - Sahrdaya Centre of Excellence for Healthcare Technologies
- Agappe Innovation Hub
- Biomedical Signal Processing Lab
- Project Lab
- Medical Embedded Computing & Virtual Instrumentation Lab
- Biomedical Clinical Instrumentation Lab
- Medical Electronics Lab

7.7 DEPARTMENT LIBRARY

The Department library holds a large number of books related to the graduate and postgraduate levels. Students refer to books on their assignments, projects and research activities.

7.8 TECHNICAL ASSOCIATION- EBSA

The Engineering biomedical students association EBSA conducts various activities throughout the academic year and is actively involved in:

- Creating sufficient awareness about BME among health care professionals and the public.
- Inviting Guest lecturers of eminent industrialists, academicians, and management personalities to motivate and guide the members.
- Collaboration with industries & research wings that can give a whole new dimension and professionalism.
- Encouraging and guiding the students for their higher studies, competitive exams & conducting career guidance programs
- Publication of newsletter
- Encouraging technical group activities and offering placement assistantship to its members.

7.9 DEPARTMENT ADVISORY COMMITTEE

The committee ensures the effective functioning of the Department. A mandatory meeting is held before the onset of every semester to discuss the planning of the upcoming semester and evaluating the department activities in the previous semester. The main objective is to identify the curricular gaps and plan to add-on courses & other activities to fill the curricular gaps. The committee comprises of HOD, Academicians, Industrial Experts, Alumni representatives, PTWA member, Program Coordinator and Senior Faculty Members



SL NO.	NAME	DESIGNATION
1	Dr. Finto Raphel	HOD-BME, SCET
2	Mr. Sujith S	Managing Director, IBIS medical systems- Industrial expert
3	Mr. Varghese N Ouseph	AVP (R&D), AGAPPE DIAGNOSTICS LTD-Industrial Expert
4	Dr. Venugopal	Professor, Department of Instrumentation and Control Engineering, N. S. S. College of Engineering Palakkad-Academic Expert
5	Dr. Mahesh R Panicker	Assistant Professor, Electrical Engineering, IIT Palakkad-Academic Expert
6	Mr. Sreenath G	Alumni representative, Territory Manager, Cardiac Rhythm & Heart Failure-CVG, Medtronic
7	Ms. Soumya M	Alumni Representative, Technical consultant-ISEA, C-DAC Hyderabad
8	Ms. Raji Many	PTWA Member
9	Mr. Daison K L	PTWA Member
10	Dr. Yuvaraj Velusamy	Associate Professor, BME, SCET
11	Dr. Remya George	Assistant Professor, BME, SCET
12	Mr. Jibin Jose	Assistant Professor, BME, SCET
13	Ms. Reshma Jose	Program Coordinator, BME



8. DEPARTMENT OF BIOTECHNOLOGY

8.1 VISION

To be a national centre of excellence in Biosciences and Bioengineering

8.2 MISSION

- Educate the next generation of engineers with a relevant curriculum that will enable them to integrate biological sciences with engineering fundamentals that can create, model, and modify biological systems for industrial applicability.
- Encourage and facilitate research that would enable students to acquire new knowledge that is industrially and socially relevant.
- Train students to be leaders who value professional ethics and realize the need for societal contribution and environmental sustainability in their work.

8.3 PROGRAM EDUCATIONAL OBJECTIVES

PEO1	To be equipped with the engineering skills and technical concepts enabling them to take up careers in Biotechnology and allied fields globally
PEO2	To instill the passion for lifelong learning and scientific discovery that will allow them to conduct research and innovate technologies keeping them motivated to take up research, entrepreneurial or industrial careers
PEO3	To inculcate entrepreneurial and techno management skills along with professional and ethical responsibility empowering them to be responsible and socially aware citizens

8.4 PROGRAM SPECIFIC OUTCOMES

PSO1	To measure, model and manipulate properties of biological systems at the cellular and molecular level so as to produce sustainable products that address environmental and ethical standards
------	--



PSO2	To formulate and execute quantitative and design- oriented analysis of biological systems with modern tools and techniques that generate new knowledge at the interface of engineering and biology
PSO3	To transform as socially relevant biological engineers having a professional outlook that would enable them to work as a part of a team in an industrial, research or entrepreneurial set up and sustain a desire for higher learning and research

8.5 DEPARTMENT INFRASTRUCTURE

The aesthetically designed multimedia equipped classrooms, tutorial and Seminar halls will provide an ambience conducive for learning, lectures and presentations.

Infrastructure Details

SL.NO	ROOM NO	PURPOSE
1	013	Chemical Engineering Lab1
2	216	BT Library
2	301,302,306	Classrooms
4	303	BT Faculty Room
5	305	HOD Room
6	307	Model Room
7	308	BT Lab 2(Bioprocess Lab)
8	309	Project Lab
9	310	Rest Room (Women)
10	311	Seminar Hall 3
11	313	Rest Room(Men)
12	314	Lab Iv Microbiology
13	315	Lab V Molecular Lab



8.6 LABORATORIES

1. Chemical Engineering Laboratory
2. Bioprocess Engineering Laboratory
3. Microbiology Laboratory
4. Molecular Biology Lab
5. Project Lab

8.7 DEPARTMENT LIBRARY

In addition to the Central Library, a well-equipped departmental library is functioning in the department catering to the needs of the faculty and students with a seating capacity of 30. The library will be open from 9.00 am to 4.00 pm on all working days. All BTE department staff and students are eligible to use the library. Others can make use of the Library only with special permission of the library in charge of the department. The reference textbooks available in the library are around 860. Project and Seminar reports of previous semesters are also available for the reference.

8.8 TECHNICAL ASSOCIATION - BEATS

The student association of the Department of Biotechnology at Sahrdaya College of Engineering and Technology, BEATS aims at nurturing the student leadership and overall personality development. BEATS encourages and promotes activities beneficial to the students of the department and the college at a whole. Right from the departments' inception, the association has been taking the lead in organizing several state level and national seminars and workshops and also bringing in eminent personalities from research organizations and industries. The association also organizes special programs for the students in connection with special occasions like Science Day, Water Day, AIDS Day etc. The association also organizes several competitions to inculcate awareness on environmental and health care issues like poster making , quiz, collage making etc .

8.9 DEPARTMENT ADVISORY COMMITTEE

This committee ensures the effective functioning of the Department. A mandatory meeting is held before the onset of every academic year to discuss the setbacks of previous semesters and to ensure acute progress in the coming semesters. The committee consists of an Industrialist, an academican, an alumni, a PTWA member and senior faculty members of the department. The following are the members of Committee:

SL. NO.	NAME	DESIGNATION
1.	Dr. Sandhya C	Professor, KE College, Mannanam
2	Mr. Sunil Jose	DGM, Product Development, Arjuna Natural Pvt Ltd, Alwaye
3	Ms. Demmy John	Teacher, PVSHS, Parappukkara (Parent Representative)
4	Mr. Abey Joseph	Research Scholar, NIT Calicut



5	Dr.Ambili Mechoor	Professor & HOD
6	Dr.Dhanya Gangadharan	Associate Professor
7	Dr.Uma Krishnakumar	Assistant Professor
8	Ms. Salini P J	Assistant Professor



9. DEPARTMENT OF CIVIL ENGINEERING

9.1 VISION

To be a centre of excellence to mould technically competent Civil Engineers with high caliber and ethical values to serve the society.

9.2 MISSION

- To provide technical expertise with strong emphasis of professional ethics and social commitment.
- To mould competent Civil Engineers to take up the challenges in the field of Civil Engineering
- To encourage students for pursuing higher education and research.
- To undertake professional consultancy services in diverse areas of Civil Engineering

9.3 PROGRAM EDUCATIONAL OBJECTIVES

PEO1	Apply the acquired knowledge and skills in Civil Engineering to become successful and competent professionals, capable of contributing effectively to the domain of civil Engineering and to cater to the needs of the society
PEO2	Demonstrate leadership qualities in the execution and management of Civil Engineering projects, upholding professional ethics and sustainability concepts
PEO3	Engage in lifelong learning with a quest to keep abreast with the latest developments in Civil Engineering

9.4 PROGRAM SPECIFIC OUTCOMES

PSO 1	Apply acquired knowledge in technical areas to civil engineering problems, including but not limited to structural, geotechnical, transportation, geoinformatics, environmental, and water resources engineering
PSO 2	Design a system, component, or process to meet desired needs within realistic constraints such as economic, environmental, social, political, ethical, health and safety, manufacturability, and sustainability



PSO 3	Familiarise with various facets of construction and its planning like project scheduling, resource and material management, understand the impact of engineering solutions in a global, economic, environmental, and societal contexts
----------	--

9.5 DEPARTMENT INFRASTRUCTURE

The aesthetically designed multimedia equipped classrooms, tutorial and Seminar Halls will provide an ambience conducive for learning, lectures and presentations.

9.6 LABORATORIES

Materials Testing lab, Surveying lab, Geotechnical Engineering lab, Environmental Engineering lab and CAD lab are all equipped with modern equipments and instruments and State-of the art infrastructure that enables students to gain knowledge through practice.

9.7 DEPARTMENT LIBRARY

The Department library hold large number of books related to graduate and postgraduate level. It is also equipped with the seminar reports and project reports of all previous batches which are maintained for student reference. All faculties and students of the Department are allowed accesses to the library from 8:30 AM to 3:30PM. Students are allowed to refer books during intervals and the entry is strictly monitored with log registers. Entry of students during class hours is not entertained.

9.8 TECHNICAL ASSOCIATION- PACE

The Progressive association of Civil Engineering, PACE has been working consistently towards building a better life for people. Their vision aims to gain progress through a high standard quality education by keeping pace with new challenges in the field of Civil Engineering through a mission of creating dynamic professionals with their enthusiasm and creativity unleashed for creating better solutions and to make life on this earth worth living through various activities. The association has conducted various events such as talks on modern construction methods, entrepreneurship, add on courses such as REVIT architecture etc. Their socially committed activities include a home built by the students for a poor and destitute old woman and her mentally retarded son, a project named "SAHRDAYAM 2016".

On successful completion of "Sahrdayam 2016" similar projects were taken up in 2018-19 and 2019-20 for reconstructing the residences damaged in devastating flood in 2018.

9.9 DEPARTMENT ADVISORY COMMITTEE

This committee ensures the effective functioning of the department. A mandatory meeting is held before the onset of every semester to discuss the setbacks of previous semesters and to ensure acute progress in the coming semesters. The members discuss the drawbacks of previous semesters and also discuss various ways to implement new activities in the future semesters during the meeting. The main objective of this Committee is to identify the curriculum gaps, planning of add on courses & other activities. The Committee comprises of an Academician, Industrial Expert, Alumni member, PTWA member, HOD, Program Coordinator and Faculty Members.



The following are the members of Committee:

NAME OF THE CANDIDATE	DESIGNATION
Prof. Sreemahadevan Pillai	Director of the Ahalia Group of institutions in India, Dean-Faculty of Engineering of the University of Calicut
Er. Devis P C	Industrial Expert
Ms. Shiny P J	Assistant Engineer LSGD Subdivision Cherpu Block Panchayat & Parent of S6 CE (2019-2023) Batch
Ms. Athulya Philo Joseph	Alumni (2016-2020 Batch) Systems Engineer, Infosys.
Dr. Drisya M	Chairman & HOD Associate Professor
Mr.Sunny C P	Senior Faculty
Ms. Aiswarya M S	Senior Faculty
Ms. Ragi C Ravindran	Convenor & Program Coordinator



10. DEPARTMENT OF COMPUTER SCIENCE ENGINEERING

10.1 VISION

To be a nationally recognized center for quality education and research in diverse areas of computer science engineering, with a strong social commitment.

10.2 MISSION

1. Impart relevant technical knowledge, skills and attributes along with values and ethics.
2. Enhance creativity and quality in research through project based learning environment.
3. Mould Computer Science Engineering Professionals in synchronization with the dynamic industry requirements.
4. Inculcate essential leadership qualities coupled with commitment to the society

10.3 PROGRAM EDUCATIONAL OBJECTIVES

PEO1	To take up challenging careers in suitable corporate, business or educational sectors across the world, in multi-cultural working environment.
PEO 2	To develop and design innovative and novel solutions to solve real life problems in the domain of computer science.
PEO 3	To be responsible citizens with good team-work skills, competent leadership qualities and holistic values.

10.4 PROGRAM SPECIFIC OUTCOMES

PSO 1	To mould students to understand, analyze and develop computer technologies in the areas such as algorithms, system software, multimedia, web design, big data analytics and networking for efficient design of computer-based systems of varying complexity.
PSO 2	To enhance knowledge in the evolutionary changes in computing and apply standard practices and strategies in software project development using open-ended programming environments in order to deliver a quality product for business success and meet the future challenges.
PSO 3	To enable students to employ modern computer languages, environments, and platforms for creating innovative career paths to be an entrepreneur with social accountability.



10.5 DEPARTMENT INFRASTRUCTURE

The aesthetically designed multimedia equipped classrooms, tutorial and Seminar halls will provide an ambience conducive for learning, lectures and presentations.

Infrastructure Details -

SL.NO	ROOM NO	PURPOSE
1	203, 207, 208	CS LAB1, LAB2, LAB3
2	204,205,206	CS CLASSROOM 1
3	209	RESTROOM (LADIES)
4	210	RETIRING ROOM (LADIES)
5	211	STAFF RESTROOM (LADIES)
6	212/213	CS FACULTY ROOM 1
7	214	RESTROOM (GENTS)
8	215	PROJECT LAB
9	216	DEPARTMENT LIBRARY
10	216	CS FACULTY ROOM 2
11	216	RESEARCH LAB
12	217,218,216	CS CLASSROOM 4
13	308	SEMINAR HALL
14	309	CS TUTORIAL CLASSROOM
15	118 (MB)	DESIGN PROJECT LAB

10.6 LABORATORIES

We have 6 labs and the common features of the labs are:

1. CSLAB 1
 2. CSLAB 2
 3. CSLAB 3
 4. Design Project Lab (Main Computer Center)
 5. Project Lab
 6. Research Lab
- Exclusive Systems for each student.
 - 24 x 7 internet connectivity in each lab with 32 Mbps speed.
 - 24 x 7 Wi-Fi connectivity & surveillance by camera in each lab.



- Each system is protected with Antivirus software's.
- Entry of the lab by students is recorded in the Login register.
- Uninterrupted power supply

10.7 DEPARTMENT LIBRARY

In addition to the Central Library, a well-equipped departmental library is functioning in the department catering to the needs of the faculty and students with a seating capacity of 30. The library will be open from 9.00 am to 4.00 pm on all working days. All CSE department staff and students are eligible to use the library. Others can make use of the Library only with special permission of the library in charge of the department. The reference textbooks available in the library are around 160. Project and Seminar reports of previous semesters are available for the reference.

10.8 TECHNICAL ASSOCIATION – ACES

The mission of the Department consists of three interrelated components: providing the highest quality instruction to our undergraduate and graduate students, conducting leading-edge research in computer science and engineering, and providing leadership and service to our professional communities'. We are committed to excel in all three components of this mission. With nearly 200 members, the ACES (Association of Computer Engineering Students) of Sahrdaya College of Engineering and Technology, the most intense association of Computer professionals, inaugurated in 2004, is the most dedicated association in boosting the technical expertise, the dexterity and the improvement of its member's proficiency. Our vision is to be the leading association in providing services regarding technical information to its members. The Association conducts inter group & intra group seminars, applications-related and research-oriented talks, seminars, symposiums, industry institution interaction programs, various technical events, cultural programs and technical events.

10.9 DEPARTMENT ADVISORY COMMITTEE

This committee ensures the effective functioning of the Department. A mandatory meeting is held before the onset of every academic year to discuss the setbacks of previous semesters and to ensure acute progress in the coming semesters. The committee consists of an Industrialist, an academician, an alumni, a PTWA member and senior faculty members of the department.

The following are the members of Committee:

<u>SL.</u> <u>NO.</u>	<u>NAME</u>	<u>DESIGNATION</u>
<u>1</u>	<u>Dr.R Satheesh Kumar</u>	<u>Assoc. Professor, CSED, SCET</u>
<u>2</u>	<u>Dr. N Krishnaraj</u>	<u>Assoc. Professor ,CSED,</u> <u>SRM Institute of Science and Tech.</u>



<u>3</u>	<u>Dr.S.Balamurugan</u>	<u>Founder & Chairman, Albert Einstein Engineering and Research Labs</u>
<u>4</u>	<u>Ms. Maritta Stephen</u>	<u>M.Tech Scholar in NSS Palakkad</u>
<u>5</u>	<u>Mr. Balasubrahmannian</u>	<u>Educational Consultant</u>
<u>6</u>	<u>Dr. R Sundar</u>	<u>Assoc. Professor, CSED,SCET</u>
<u>7</u>	<u>Ms. Jasmy Davies</u>	<u>Asst. Professor, CSED,SCET</u>
<u>8</u>	<u>Mr. Krishnadas J</u>	<u>Asst. Professor, CSED,SCET</u>
<u>9</u>	<u>Ms. Deepa Devassy</u>	<u>Asst. Professor, CSED,SCET</u>
<u>10</u>	<u>Ms. Divya R</u>	<u>Asst. Professor, CSED,SCET</u>
<u>11</u>	<u>Ms. Sreetha E S</u>	<u>Asst. Professor, CSED,SCET</u>
<u>12</u>	<u>Ms. Priya K V</u>	<u>Asst. Professor, CSED,SCET</u>
<u>13</u>	<u>Mr. Scaria Alex</u>	<u>Asst. Professor, CSED,SCET</u>



11. DEPARTMENT OF ELECTRONICS & COMMUNICATION ENGINEERING

11.1 VISION

To evolve as a Center of Excellence in Electronics and Communication Engineering that moulds technically sound, socially responsible technocrats.

11.2 MISSION

- Provide excellent academic and practical environment that nurtures and transforms students into technically competent professionals with innovative skills.
- To equip the students to meet the growing challenges of the society through constant interaction with research organizations and industry.
- Inculcate professional values, entrepreneurial skills and social commitment and responsibilities with a passion for holistic excellence.

11.3 PROGRAM EDUCATIONAL OBJECTIVES

PEO1	To demonstrate technical competency and leadership to become professional electronics engineers leading to a successful career.
PEO2	To adapt to current trends by engaging in lifelong learning.
PEO3	To demonstrate commitment towards sustainable development for the betterment of society.

11.4 PROGRAM SPECIFIC OUTCOMES

PSO1	Apply the fundamental knowledge of Electronics and Communication Engineering to design and implement various types of electronic systems in communication, signal processing and embedded systems domain.
PSO2	Follow and adapt to the dynamic trends in the field of Electronics Engineering.



PSO3	Apply electronic hardware and software tools to find the solutions for problems encountered by the society.
------	---

11.5 DEPARTMENT INFRASTRUCTURE

The aesthetically designed multimedia equipped classrooms, tutorial and Seminar halls will provide an ambience conducive for learning, lectures and presentations.

11.6 LABORATORIES

Electronics Circuits lab, Microprocessor & Microcontroller lab, VLSI Design lab, Communication & Digital Signal Processing lab, Embedded Systems lab and Project Lab all are equipped with modern equipments and instruments and State-of the art infrastructure that enables students to gain knowledge through practice.

Centre for IoT and Robotics research (CIRR)

The Centre for IoT and Robotics research was established in the year of 2018 with a view of promoting the Internet of Things (IoT) and Robotics related research and studies in Sahrdaya College of Engineering and Technology.

The IoT facility is funded by the Kerala Startup Mission. Various development boards and components such as sensors, actuators, communication devices, power supplies etc., required to make IoT related projects are available in the lab.

Robotics lab is supported by IIT Bombay under their e-Yantra Lab Setup Initiative (eLSI). 'Firebird V' Robotic training kits and associated components are available to learn the basics of robotics.

Under the centre, students are provided with regular hands on training in IoT and robotics during semester breaks and holidays and are supported to do their B. Tech projects. Students can set up and test their prototypes using the facilities available in the lab and can scale up once it is tested ok. Apart from students, teachers are also trained under the centre through faculty development programs.

Facilities

- Desktops with Intel i5 Processor- 9 Nos.
- High speed wifi connectivity
- Fully Furnished Air conditioned Lab with workbench with power supply, round tables, chairs and shelves for safekeeping of equipment.

11.7 DEPARTMENT LIBRARY

A well-equipped departmental library is functioning catering to the needs of the faculty and students with a seating capacity of 30. The library will be open from 9.00 am to 4.00 pm on all working days. Issue & return of books will be from 12.10 pm to 01.00 pm. There are nearly 320 textbooks, Seminar, Project, Industrial Visit reports, Solved University question papers, TrEnDs proceedings and SCINTILLA.

11.8 TECHNICAL ASSOCIATION- EMAGE

EMAGE (Electronics Maestro Association for Geared Excellence) is the technical association of the Department of Electronics and Communication Engineering. The objective of the association is to foster technical and managerial skills of the students by mentoring them to participate in technical events and organize technical programs in the department. All the students and members of the faculty of the



Department of Electronics and Communication Engineering are given default membership in the association.

By promoting practical oriented activities, the association helps to bridge the gap between academics and requirements of the industry. Activities under EMAGE enables the members to work as a team, thereby improving the team working spirit, leadership qualities, managerial skills, communication skills and more over helps them to understand the importance of mutual understanding, co-operation and co-existence. The day-to-day activities of the association are coordinated by students, with a member of the faculty as the Advisor.

11.9 DEPARTMENT ADVISORY COMMITTEE

This committee ensures the effective functioning of the Department. A mandatory meeting is held before the onset of every semester to discuss the setbacks of previous semesters and to ensure acute progress in the coming semesters. The following are the members of the Committee.

Sl. No.	NAME	DESIGNATION
1	Dr.Dhanesh Chandran	Scientist STARC DRDO Bangalore
2	Dr.Vishnu Rajan	HOD, ECE
3	Ms.Ambily Francis	Asst.Professor, ECE (Program Co-ordinator)
4	Ms.Binet Rose Devassy	Asst.Professor, ECE
5	Dr.Gnana King	Asso.Professor, ECE
6	Ms.Jisha Jacob	Asst.Professor, ECE
7	Mr.Santhosh Kumar M.S.	Asst.Professor, ECE
8	Ms.Divya Unni	Asst.Professor, ECE, VAST
9	Ms.Blessy Daise Paul	Alumni
10	Mr.Paulson	Parent



12. DEPARTMENT OF ELECTRICAL & ELECTRONICS ENGINEERING

12.1 VISION

To excel in engineering education and research, inculcating professional ethics in students and emerge as leaders globally in the field of Electrical Engineering

12.2 MISSION

Impart quality education to produce competent electrical engineers capable of extending technological services

Engage in research and development by promoting innovative ideas and use of state-of-art technologies

To enable students to meet the challenges in the field of Electrical Engineering through innovations and pursuit of new knowledge and make them ethically driven professionals

12.3 PROGRAM EDUCATIONAL OBJECTIVES

PEO 1	To use broad knowledge of electrical engineering as a foundation to be qualified research engineer in the field of electrical product design and allied consultancy works
PEO 2	To impart creative and critical reasoning skills to solve technical problems, ethically and responsibly, feasible with the environment.
PEO 3	To provide students with an academic of excellence, leadership, written ethical codes and guidelines, and the life-long learning needed for a successful professional career as engineers, scientists, technocrats, administrators and an entrepreneur.
PEO 4	To inculcate in students professional and ethical attitude, effective communication skills, teamwork skills, multidisciplinary approach and an ability to relate engineering issues to broader social context

12.4 PROGRAM SPECIFIC OUTCOMES

PSO 1	Ability to analyze, design and synthesize different electrical and electronic systems for applications with knowledge of various materials used and its feasibility with the environment.
PSO 2	To develop software based comprehension and use of MATLAB, CAD, MIPOWER etc in applied science.



PSO 3	Creative design to produce and maintain quality of power supply and use of suitable instruments for energy audit and calibration.
PSO 4	To understand the concepts of modeling analysis of electrical and electronic systems and application of different converters and processors to optimize the process.

12.5 DEPARTMENT INFRASTRUCTURE

The aesthetically designed multimedia equipped classrooms, tutorial and Seminar halls will provide an ambience conducive for learning, lectures and presentations.

12.6 LABORATORIES

We have 7 labs and 1 Electrical workshop. Basic Electrical Engineering Lab/Electrical Measurements and Instrumentation Lab, Analog Electronics Lab, Digital Electronics Lab, Machines Lab I/Machines Lab II, Power Electronics Lab, Advanced Electrical Engineering Lab exclusively for Electrical and Electronics Engineering students and Electrical Engineering Lab for Electronics and Communication Engineering and Bio Medical Engineering students

12.7 DEPARTMENT LIBRARY

The Electrical and Electronics department is blessed with a nutritious library which is a collection of books concerned with all the core fields of electrical engineering like Machines, Control Systems, Power Systems, Power electronics as well as Analog and Digital electronics. These books are contributed by internationally accepted authors. The Department Library is well maintained with all features intact and in well connection with the College Main Library. The department library is always accessible for the students in such a way as to cater to their needs while maintaining proper discipline at the same time.

12.8 TECHNICAL ASSOCIATION- AESON

The AESON (Adroit Electrical Students Association) of Sahrdaya College of Engineering & Technology represents current students within the Electrical Engineering Dept. at Sahrdaya College of Engineering & Technology. Our goal is to organize social and professional activities which strengthen and enrich the community within the department, and to help publicize various research activities within the department. We organize social events, host talks by guest speakers and students, and help communicate with the department and the students

Aims and Objectives

- To further the knowledge and awareness in the field of Electrical and Electronics Engineering through conferences, workshops, seminars and awareness programs.
- Inviting Guest lecturers of industrialists, academicians, management personalities to motivate and guide our members.
- To develop leadership and initiative, and to inculcate a sense of responsibility amongst the members of the Association
- To create a forum for the exchange of ideas between students and staff of the department and other departments in the school and provide a conducive atmosphere for social contact between the aforementioned.



12.9 DEPARTMENT ADVISORY COMMITTEE

This committee ensures the effective functioning of the Department. A mandatory meeting is held before the onset of every semester to discuss the setbacks of previous semesters and to ensure acute progress in the coming semesters. The following are the members of the Committee.

SL NO	NAME OF THE MEMBER	DESIGNATION/DEPARTMENT
1	Jovin T P	Lead Engineer - Technical Application Engineering, General Electric(GE), Chennai.
2	Dr.Gopakumar P	Assistant Professor, NIT Calicut
3	Femi C Anto	Hardware Wngineer, VVDN Technologies, Chennai Alumni (2017-2021 batch)
4	Reena Jose	Parent Representative
5	Dr.Vijikala V	Associate Professor, HOD EEE
6	Mr.Sebin Davis K	Assistant Professor
7	Ms. Neethu John	Assistant Professor
8	Ms. Ashna Mohan	Assistant Professor
9	Ms. Drisya K Sasi	Assistant Professor
10	Mr. Adarsh S R	Assistant Professor



13. DEPARTMENT OF APPLIED SCIENCE & HUMANITIES

Department of Applied Science and Humanities has access to all streams of students irrespective of their branch of specialization. The department helps them in moulding the right attitude towards Mathematics, Physics, Chemistry Economics and English. It also imparts training in life skills such as communication skills, soft skills and personality development skills so that the students can face the challenges of the changing world with confidence. Each discipline the department undertakes has its own laboratory with the latest equipment and software. The department is equipped with competent and enthusiastic faculty members ready to adapt themselves with the rapidly changing technical world.

13.1 LABORATORIES

13.1.1 PHYSICS LAB

Engineering physics lab is a well equipped lab of Sahridaya College of Engineering and Technology. Here students are taught to find the wavelength of monochromatic light like sodium vapour lamp and polychromatic light like Mercury vapour lamp using spectrometer. Using travelling microscope and sodium lamp students are trained to measure the thickness of hair thin metal wire accurately. Students are trained to find the frequency of A tuning fork by melde's string making them vibrating longitudinal and transverse mode.

Advanced experiments like optic fibre is offered to students. They find acceptance angle and numerical aperture of optic fibre cable. Finding the wavelength of laser light is yet another experiment. Here they find out the fill Factor and efficiency of a solar cell. Using CRO, students are trained to find out the amplitude and frequency of a signal by forming lissajous figures. The dispersive and resolving power of a grating is also determined by adopting the instrument of spectrometer.

13.1.2 CHEMISTRY LAB

Engineering Chemistry Laboratory at Sahridaya College of Engineering is a state of the art laboratory with a wide range of equipments to cater to the needs of Dr A.P.J Abdul Kalam Technological University's first year curriculum. It enables the students to have a hands on training on various topics they study in "Engineering Chemistry" theory course. The lab is designed spaciouly and well-ventilated to accommodate a capacity of 30 students at a time. The laboratory's design includes ceramic tiles on all working tables, separate balance room and chemical store room. The lab is equipped with UV-spectrometer, PH meter, Potentiometer and Conductivity meter

13.1.3 MECHANICAL WORKSHOP

Mechanical Engineering Workshop is a place where students acquire knowledge on the operation of various processes involved in manufacturing and production. The Workshop Practice course makes students competent in handling practical work in engineering environment. Mechanical Engineering Workshop consists of sheetmetal, fitting, carpentry, foundry, smithy and welding.



14. CENTRAL LIBRARY

Sahrdaya Knowledge Center, the multi-storey fully automated infrastructure marvel with excellent amenities and facilities, functions as the pivotal Learning Resource Hub of the institution. The centre includes Central Library, an international standard multimedia and video conference theatre, lecture spaces and academic event zones, stocks and distributes not only traditional educational resources such as books, journals, general reading publications, software and audio/visual materials, but also state of the art electronic information resources, electronic journals, databases, and other web based resources. The Central Library follows the Open Access System and has a seating capacity of 425 spread in 4410 SQM. In addition to the central library, each department has a separate department library also.

Our college website provides link to the Central Library. This link helps to search books, journals, magazines, CD/DVD collections, Institutional Digital Repository, links to various e-resources, News Letters, Library services, rules and regulations, etc.

E-Resources: Include IEEE-ASPP, EBSCO-BIOTECHNOLOGY COLLECTION, DELNET, E-BOOKS - ENGINEERING CORE, DELNET, IEL, IETE, NPTEL, INVENTI JOURNALS, MAT JOURNALS AND INSTITUTIONAL DIGITAL REPOSITORY. LIBRARY PROVIDES ACCESS TO NATIONAL DIGITAL LIBRARY OF INDIA (NDL), SWAYAM, SHODHGANGA, E-YANTRA, IGNOU GYANDHARAPRABHA, SWAYAM PRABHA, E-PG PATHSHALA.

14.1 LIBRARY REGULATIONS

- 1) Personal belongings except purses and few sheets of white paper are not allowed beyond the issue counter. They shall be kept at the property counter.
 - 2) Students shall maintain unbroken silence in the library. It is not the place for discussions, chatting, sleeping etc.
 - 3) Students are liable to pay compensation if they misbehave or damage books or any other property of the library.
 - 4) All Students and Staff members must scan the barcode printed in their college ID card in the scanners provided at the entrance of the library before entering the library and also at the time of leaving.
 - 5) Circulation Policies : Library circulation is controlled by automation software KOHA. Producing college ID card having Barcode and library card is necessary for issuing a document from the library. Each student shall be provided Borrower's Cards for taking books from the library.
- Books shall be issued to students for a fortnight. If the books are not returned on or before the due dates, students have to pay an overdue charges. In case any book is lost or damaged by the student, the student shall replace it with a new book or shall pay the cost of replacement plus Rs. 50.00. If a book is one of the volumes of a set, the student may be asked to replace the whole set.
- 6) Library will not be responsible for the loss of students' belongings from the property counter.
 - 7) No- Due certificate: All library dues should be cleared and a No-Due Certificate (NDC) obtained to this effect before registering for the examination of that particular semester
 - 8) Overnight Issue, Semester Issue & Discount Scheme

Students can take reference books through overnight scheme (Issue Time – 5.00 pm to 6.30 pm only from Monday to Friday, except Friday prior to second Saturday. These books should be returned before 9 am on the following working day. Only one book will be issued to one student. They have to submit their ID card for such issue. Books costing more than Rs. 1,500 will not be issued under this scheme. Students who fail to return books on the due date also have to pay compensation of Rs. 10 per hour per book up to one week and after 1.5 times the price of the book, whichever is higher.



Semester Issue:

Students can take four books under this scheme for using in a semester. They have to give an online request at the beginning of the semester and according to the availability of the books students can collect these books within few days from the library. List of available books will be displayed on library Notice Board. They have to return these books and need to pay 25% of the cost of the books at the end of the semester exam. For those who fail to collect these books from the library before the due date, 25% of the cost of the books will be considered as library due. If the books are not returned on or before the semester exam, students have to pay a fine of Rs. 2 per day per book.

Discount Scheme: This facility is only to help students to purchase books on discount. Under the Discount Scheme, students can apply any number of books through the online link available in the college website at the beginning of the semester. After getting these books from the vendors, the list of available books will be published on library notice board. Those students need to pay only 85% of the cost of the books; they need not return these books. For those who fail to collect these books from the library before the due date, 85% of the cost of the books will be considered as library due.

9) Photocopying : Photocopying from books, not exceeding ten pages, is permitted. Book issued for photocopying must be returned without any damage within the specified time. Failure to do so will lead to a compensation of Rs. 10 per book per hour.

10) Digital library

Students have to strictly follow the following guidelines:

- Students are expected to fill the details in the registers provided in the Digital Library before using the systems and at the time of leaving.
- Use internet only for academic purpose and correspondence.
- Playing music and games, watching movies etc will not be allowed.
- Maintain strict silence. Digital Library is not a place for discussion.
- The System will be provided on the basis of availability (First come first serve)(One system for one student).
- If there is a queue of waiting students, they cannot use internet for more than half an hour.
- Do not manipulate system settings and experiment with TRS programs or viruses.
- Students are liable to pay compensation for any damage caused while using the system.

14.2 COVID PROTOCOL

World Health Organization (WHO) has declared Covid-19 as a pandemic. The need of the hour is to take all measures to contain the outbreak through strict surveillance and infection control measures. In order to ensure there is no spread of Covid – 19 in/through the Central Library, all staff members and students are requested to strictly follow the guidelines given below.

- All must wear a face mask.
- Use an alcohol-based hand sanitizer/Wash hands with soap and water.
- Maintain a safe distance of at least 1 meter from others.
- If anyone has a cough, fever, difficulty in breathing, please contact a doctor immediately and ensure that you are not infected.

All books in the central library are disinfected. Using UVC technology, the books returned by the staff members and students are decontaminated every day. This virus-free healthy environment is very much necessary to maintain the library. So before entering the library, all must make sure that they are free from corona virus and strictly follow the above instructions.



15. TRAINING AND PLACEMENT DEPARTMENT

The Training and Placement cell provides a platform to enable deserving students of Sahrdaya College of Engineering & Technology to get best placements.

We nurture industry-institute interaction, by organizing and coordinating frequent invited talks, internships, industrial visits and projects of industrial relevance for the students, with the sole aim of bridging the gap between the industry and the academia.

Above 75 percent students are being placed every year from the institute. Our students have been recruited by various reputed multinational organizations in India and abroad. This placement performance is due to the rigorous pre- placement training every student of the institute goes through which boosts their confidence and this makes them employment ready. By conducting Study group Activities every Friday, efforts are on to improve the communication, group discussion and presentation skills of the students. Students are given coaching by prominent and experienced persons to enable them to acquaint to the current corporate requirements, to improve their skills like Personality Development, CV Writing, Communication Skills, Aptitude Tests, Interview Technique, Group Discussions, Technical and Personal Interviews, which are all required for getting suitable jobs. We have collaborated with many organizations through which we impart state of the art training to students to make them competent and inspired engineers. Eminent engineers and personalities are invited to deliver lectures and hold seminars on emerging fields, with a view to bring out the technical expertise within the students.

The Cell conducts below mentioned training programs and provides guidance to students on career-related matters and assist them in exploring new opportunities in the corporate world.

- Sessions are arranged for the students intended primarily to assist students in their career planning and provides information that helps the students to give a direction to their aspirations and interests.
- Trainings are provided by Industry such as Infosys – Infosys campus connect, Red Hat Academy, ASAP, GE Healthcare, Agappe, Biozeen.
- Higher studies qualifying exam GATE, BCIL, CAT/MAT/ KMAT related information and sessions are arranged.
- Information regarding the future career options of the students is asked for and the right support based on their choice is provided
- Arranges training sessions that enhances the students to compete with the best challenges in Industry.
- Career Guidance Questionnaire is collected by TPO through Google form in the beginning of seventh semester.
- Career counselling programs are undertaken periodically by the placement coordinator to guide the students.
- Interactive sessions by the eminent persons in respective fields are conducted regularly.
- Training programs on soft skills, aptitude tests and technical skills are given periodically
- Grooming sessions, Group Discussion and Mock Interview Sessions, Competitive/Scholarship Exams Training are also conducted
- Industry Internships are promoted from first year onwards
- Support Industrial Visits from First year onwards
- Language Lab facility in the campus gives the students to improve their Communication skills

Many of our students have qualified in competitive exams and are working in Central and Govt. sectors. Also, pursuing higher studies like Ph.D., M.Tech and MBA in premier institutes and from recognized high ranking foreign universities.

We have more than 20 MoU's signed with reputed organizations and also with the premier institution in Wilmington University, USA. Some students have become entrepreneurs and established their own companies across the globe.



- Dipu K Bose, Business Head, Philips
- David Alex, Country Manager, Siemen
- Febin Chiramel, R&D Solution Architect, Microsoft
- Sreya P Singh, IAS
- Jisho P Thomas, Major, Indian Army
- Pradeep, CEO, Farmers
- Nevin Jacob Koshy, Head Patent Department, Dubai
- Surmi Latheef, Scientist, UK
- Amritha Prasobh, General Secretary, UKF College
- Vipin Soman, Manager, HLL
- Sreedha Pallipat, Women Scientist, TIFAC
- Aneesh Chandra Kumaran, Product Manager, Amazon
- Martin Thomas, Platforms Lead, ICBC
- Christy Susan Varghese, Doctoral Researcher, Germany
- Loyd Alappatt, Operations Engineer, Google
- Chris John, Sr. Consultant, Deloitte
- Krishnabal K B, Sr. Specialist, Amazon
- Neelima Karippai, Project Manager, Bosch
- Vipin Varghese, Network Engineer, Intel Corporation
- George Joseph, Sr. Engineer, Stryker, US
- Bincy Varghese, Application Head, Samsung

Sahrdaya is officially collaborated with a number of organizations and established a few collaborative Center of Excellence like GE Healthcare Training center, Accenture Innovation Lab, Agappe Training center, Research Center and IoT Lab for innovation to inculcate industry-ready skills among the graduates.

Leading companies like TCS, Infosys, Wipro, Bosch, L&T, Capgemini, Hexaware, Agappe, Philips, Amazon, Byjus and many more organizations recruit our students. Our resourceful alumnae have set commendable standards in the corporate world through their admirable contributions. The consistent placement record illustrates our commitment and devotion towards creating employment opportunities to our students.

Placement Procedure: It all begins with our placement invitation request to hiring companies to confirm their participation in the placement drive for the year. The industry are expected to be share the job description for the positions they wish to recruit for mentioning clearly the position, salary, its responsibilities and the recruiting criteria, which will invariably arouse the interest of students in the drive.

Recruitment Process: Companies are usually allotted a slot in the recruitment program schedule for conducting their final recruitment process. These slots are decided purely by cumulative student preferences. Companies may conduct all pre-final assessments such as group discussions, tests and preliminary interviews prior to the day on which they are slotted. In order to make appropriate arrangements, companies are requested to provide information on their recruitment Process. In particular companies are requested to furnish information on the approximate size of groups for group discussion, number of interview rounds and approximate duration of each interview. The placement cell solicits this information two weeks prior to commencement of the campus recruitment by email to the students group.

Job offer, Acceptance etc.: All job offers to our students are channeled through Placement Cell. No job offers can be made directly to any student and it is the cell that informs the company of the acceptance of the offer by the concerned student. It is expected that when offers are made companies will make note of the specific terms and conditions as discussed and agreed upon during the interview and these will be explicitly stated in the offer form initiated by the company. A student once received an offer from a company will get a chance again to appear for a Dream Company or if the salary package is relatively more than the existing offer.

Pre-placement Talks: Hiring companies are always offered opportunity to make pre-placement talks or presentations before the recruitment or along with the recruitment showcasing their corporate requirements and job profiles. Such events also provide students opportunity to learn more about company and meet some of the key



employees. The schedule for pre-placement talks is worked out in coordination with the Training and Placement Officer.

Constitution of Training & Placement Cell

The organization structure of the Training and Placement Cell consists of administrators, HoDs, faculty members and student representatives from each of the departments. The cell organizes various training programs at regular intervals for the students, starting from the first year onward to improve their ability in the areas of reasoning, analytical skills, aptitude, technical, soft skills, communication skill etc. The objective is to prepare the students for the competitive tests, group discussion and interview as part of the campus recruitment process. Professional trainers/training agencies are invited to give the training programs in the college.

Facilities to recruiters: The Training & Placement Cell is well equipped with excellent infrastructure to support each and every stage of the placement process in the campus. The pre-placement sessions, group discussion rooms are equipped with LCD projectors, PCs and audio - video facilities. Apart from handling the needs of the students, the cell caters to the needs of the companies ranging from logistics to interview halls. The infrastructure available is suited to make the placement process a comfortable one. The following facilities are made available to the companies:

- Central Auditorium or conference Hall for Pre-Placement Talks.
- Well furnished, air conditioned conference room for Group Discussions
- Online test Facility for up to 600 students in single process.
- Air conditioned Interview rooms with all requisite facilities (including telephonic interview Facility).
- Internet & fully Computerized office Support.

Facilities	Number
TPO Office	1 no.
Conference Room of capacity of 12 members	1 no.
Auditorium of capacity 2500	1 no.
Seminar Halls / Conference Halls	6 nos.
Rooms for Group Discussion	6 nos.
Interview Rooms	10 nos.
Computer Center	8 Labs



16. PHYSICAL EDUCATION DEPARTMENT

The students are encouraged to participate in various Inter-Department, Inter-College, Zonal level tournaments, and University level programs.

The college provides excellent sports and games facilities such as cricket, football, basketball, kabaddi, volley ball, badminton, ball badminton, handball, athletics and indoor games like table tennis, carom board, chess, and yoga.

Our students have secured championships in various sports and games in the recent years.

Inter-department sports and games are held in every semester. Friendly matches are conducted occasionally to inculcate in students the feeling of sportsman spirit. Annual Sports Day is also held in the even semester for all the academic year.

Fully equipped gymnasium facilities are available for both male and female students. Badminton practices are also conducted.

• 16.1 SPORTS INFRASTRUCTURE

SL. NO	INFRASTRUCTURE	SPECIFICATION
1	Athletic Track	400Mts 6 lane
2	Badminton Courts 6 Nos.	6 indoor(13.40 x 6.10Mts)
3	Basketball Court 2 Nos.	Cement reinforced with acrylic fibre glass back boards
4	Chess Club	
5	Cricket Ground	55Mts boundary with Clay centre Wicket
6	Cricket practice Nets 2 Nos.	22yard net Cag with Clay Wicket
7	Football field	105x60Mts
8	Health Club 2 Nos.	Single & Multistation Equipments separate for Boys & Girls
9	Table Tennis Table 2 Nos.	ITTF approved
10	Volleyball Court 2 Nos.	Outdoor Clay Surface (9x9 Mts)
11	Yoga Center	Decennial block

• 16.2 LADIES HEALTH CLUB

SL.NO	ITEM	QTY
1	HOME GYM [TRAINER 1080] Lat pulley, Low Pulley, Bench/Shoulder Press, Peck- Deck, Leg Extension/curl, etc.	1
2	BENCH PRESS MACHINE 90Kg	1
3	SEATED LEG PRESS 90Kg	1
4	LEG EXTENSION/CURL 60Kg	1
5	STANDING CALF RAISE 110Kg	1
6	BODY TWISTER [Double] [With standing & Sitting]	1
7	ABB CRUNCH MACHINE	1
8	VITAL [Standing Abdominal]	1
9	TREAD MILL[A/C Motorised] [2 HP continuousDuty]	1
10	MAGNETIC CYCLE (display of speed ,distance ,time, hand held pluse ,calories)	1



11	OLYMPIC BARS (50mm)	1
12	GYM BENCH[2x2]	1
13	PUSH UP STAND [Hilton]	1
14	PUSH UP STAND [Local Purchase]	1
15	DUMBBELLS [CROME PLATED] 4KGX2 2KGX2	12KG
16	FREE WEIGHTS [CROME PLATED] 4KGX2, 2KGX2	12KG
17	MIRROR SETTINGS	7
18	RUBBERIZED FLOOR MAT	12

16.3 GENTS HEALTH CLUB

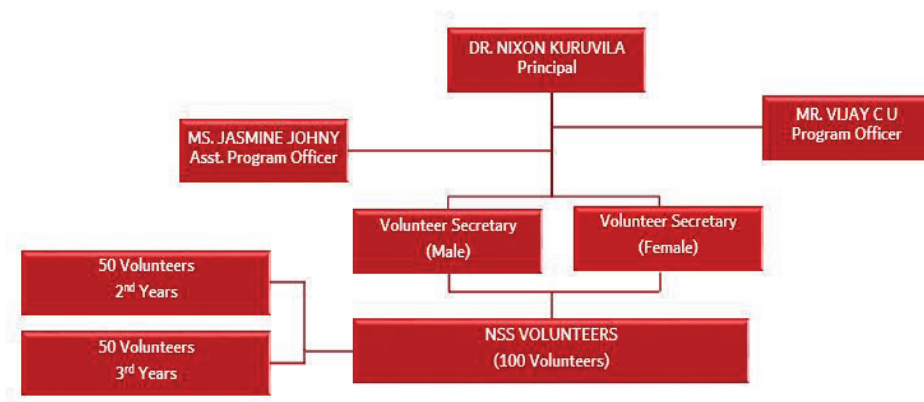
SL.NO	ITEM	QTY
1	MULTI GYM 4 STATION a)Bench Press /Shoulder Press [90 Kg] b)Leg Extension/Curl[60 Kg] c)peck deck [60 Kg] d)Lateral pully/Rowing Pulley [60 Kg]	1
2	BENCH PRESS BENCH[2X2]	1
3	SEATED BENCH PRESS [4X2] As combination equipment	1
4	MULTI BENCH TRAINER [2X2] Bench press(incline & Decline)with	1
5	PEACHER CURL [4X2] 50Kg	1
6	WRIST CURL [2X2] 40Kg	1
7	TRICEPS DIPS [4X2] 80Kg	1
8	SHOULDER PRESS [4X2] 90Kg	1
9	LATERAL FLY [4X2] 100Kg	1
10	SEATED LEG PRESS [4x2] 90Kg	1
11	HACK SQUAT MACHINE [4x2]	1
12	STANDING CALF RAISE[4x2]	1
13	HYPER EXTENSION [2x2]	1
14	COMBINATION VERTICAL KNEE RISE & CHINNING BAR [4x2]	1
15	BAR LOAD STAND [2x2]	1
16	GYM BENCH[2x2]	1
17	GYM STOOL [2x2]	1
18	GYM STOOL WITH BACK SUPPORT [2x2] [SHOULDER PRESS STOOL]	1
19	SMITH MACHINE	1
20	OLYMPIC BARS (50mm)	1
21	DUMBBELLS [CHROME PLATED] 2KGX2, 5KGX4, 10KGX4, 15KGX2, 20KGX2	134KG
22	FREE WEIGHTS [CHROME PLATED]	200KG
23	COMBINATION STAND[2X2]	1
24	MIRROR SETTINGS	9
25	RUBBERIZED FLOOR MAT	13



17. NATIONAL SERVICE SCHEME

The institution encourages the students to be a part of the NATIONAL SERVICE SCHEME – an all-round development. The NSS expects students to grow, as a good human being through social and community services. The NSS aims at improving the students' personality through camps, seminars, invitations and special talks, and from social works where they can know more than what the eye sees.

The unit of NSS is a self-financing unit with a total of 100 volunteers – 50 from IInd year, 50 from IIIrd year, and two volunteer secretaries – a male and female. The entire unit works as a team under APJAKTU NSS Cell.



The volunteers are divided into groups/committees and there is a leader for each group.

The main committees are:

- Publicity
- Poster
- Creative
- Program
- Documentation
- Notice Board

NSS meetings are held every month, with executive committee meetings held more often. The activities for the current month are decided and camps are organized.



18. SPECIAL CENTERS OF SAHRDAYA

18.1 INTERNAL QUALITY ASSURANCE CELL (IQAC)

To keep up with the changes in higher education, educational Institution must actively engage themselves in the development and implementation of quality benchmarks in all their key performance areas. Sahrdaya College of Engineering & Technology has established the Internal Quality Assurance Cell (IQAC) in 2015 to institutionalize the process of quality enhancement and sustenance in all the key areas of its delivery.

The IQAC is acting as the nodal agency entrusted with the responsibility of ensuring total quality management by ushering in innovations leading to achieving excellence and adoption of intervention strategies for monitoring their successful implementation. Ever in quest for excellence, the IQAC functions to assure institutional accountability with probity to all the stakeholders, funding agencies in particular and society as a whole. Since quality enhancement is a continuous process, the IQAC has become a part of the institution's system and work towards realization of the goals of quality enhancement and sustenance. The prime task of the IQAC is to develop a system for conscious, consistent and catalytic improvement in the overall performance; which would channelize all efforts and measures of the institution towards promoting its holistic academic excellence.

STRATEGIES

IQAC shall evolve mechanisms and procedures for :-

- Ensuring timely, efficient and progressive performance of academic, administrative and financial tasks.
- The relevance and quality of academic and research programmes.
- Optimization and integration of modern methods of teaching and learning.
- The credibility of evaluation procedures.
- Ensuring the adequacy, maintenance and functioning of the support structure and services.
- Research sharing and networking with other institutions in India and abroad.

FUNCTIONS

Some of the functions expected of the IQAC are

- Development and Application of quality benchmarks/parameters for various academic and administrative activities of the institution.
- Facilitating the creation of a learner-centric environment conducive to quality education and faculty maturation to adopt the required knowledge and technology for participatory teaching and learning process.
- Arrangement for feedback response from students, parents and other stakeholders on quality-related institutional processes.
- Dissemination of information on various quality parameters of higher education.
- Organization of inter and intra institutional workshops, seminars on quality related themes and promotion of quality circles.
- Documentation of the various programmes/activities leading to quality improvement.
- Acting as a nodal agency of the Institution for coordinating quality-related activities, including adoption and dissemination of best practices.



- Development and maintenance of institutional database through MIS for the purpose of maintaining /enhancing the institutional quality.
- Development of Quality Culture in the institution.

BENEFITS

IQAC will facilitate and contribute

- Ensure heightened level of clarity and focus in institutional functioning towards quality enhancement
- Ensure internalization of the quality culture.
- Ensure enhancement and coordination among various activities of the institution and institutionalize all good practices.
- Provide a sound basis for decision-making to improve institutional functioning.
- Act as a dynamic system for quality assurance.
- Build an organized methodology of documentation and internal communication.

18.2 INNOVATION & ENTREPRENEURSHIP DEVELOPMENT CENTER (IEDC)

Innovation and Entrepreneurship Development Center (IEDC) is an institutional mechanism to create an entrepreneurial culture in Sahrdaya and the nearby region to foster the growth of innovation and entrepreneurship amongst the faculty, students and society. IEDC was inaugurated on 10th of March, 2015 in Sahrdaya. IEDC is funded and supported by Kerala Statrup mission(KSUM), the nodal agency of the Government of Kerala for startup promotion. The various schemes of the state government are executed through IEDC.

IEDC Sahrdaya received the "Exemplary Performance Award" of Kerala Start-up Mission for the best IEDC from Chief Minister of Kerala during 2016 and the institute was awarded with "Entrepreneurship Enabler Award 2018" of Government of Kerala for its contribution to the entrepreneurial ecosystem in Kerala. APJ Abdul Kalam Technology University selected Sahrdaya as the cluster coordinating institute for innovation and entrepreneurship. In the year 2020, ICT Academy of Kerala selected Sahrdaya for its premium membership. IEDC Sahrdaya was also awarded with "Best Inclusive IEDC Kerala 2020 Award " from Kerala Startup Mission, Govt. of Kerala for promoting Innovation and Entrepreneurship spirit among women.

The centre has created an ecosystem in the region by nurturing many product based innovations. The centre also created a collaborative start-up environment with the support of different agencies such as KSUM, Kerala State Council for Science Technology and Environment (KSCSTE), Kerala State Industrial Development Corporation (KSIDC) and PM YUVA (Govt. of India). IEDC has Organized different entrepreneurship awareness camps, group discussions, training/workshops on cutting edge technologies, innovation camps, Innovation contests, Hardware Makeatho, hackathons with focus on-healthcare , social issues, information technology and Internet of Things. The IEDC Summit 2019- Asia's largest summit for student entrepreneurs was hosted at Sahrdaya on 19th October, 2019 with more than 4300 participants,



state innovation festival of Government of Kerala , named as TEKON-KETCON 2018 organised at Sahrdaya from 23rd to 25th of February 2018. The national hackathon on “Smart Technological Solutions Against Corruption ” organized by IEDC sahrdaya was a unique event and first of its kind internationally. Further, IEDC’s Design Thinking workshop to identify technological interventions against corruption at Kerala Institute of Local Administration (KILA) for 40 Officers and elected officials from five panchayath and two municipalities, was highly appreciated by the Local Self Government Department, Govt. of Kerala.

The ambience created by the IEDC and the potential of our students have created a perfect blend for supporting the entrepreneurship culture in the campus. It has co-working space, Incubation Cubicles, Centre for IoT & Robotics Research and Engineering Design Studio. Our students with their innovative drive have secured many prizes in highly reputed project/innovation competitions, both national and international which includes the prestigious Gandhian Young Technological Innovation Award from Rashtrapati Bhavan.

B’lite the superfood biscuits from Zaara Biotech, LUMOS the disinfection chamber by Devaditeck Innovations, farmersfz.com the ecommerce platform for farmers by Farmers Fresh Zone are few of the market revolutionized products from the startups of sahrdaya.

IEDC MISSION

Develop an institutional mechanism to create entrepreneurial culture in Sahrdaya and nearby region to foster growth of innovation and entrepreneurship amongst the faculty, students and common people.

IEDC OBJECTIVES

1. To act as an institutional mechanism for providing various services including information to budding entrepreneurs and innovators
2. To create, inspire and empower a young generation of self-reliant individuals and to take them a step ahead for the development of the nation by developing an entrepreneurial and innovative mindset
3. To foster the entrepreneurial culture through an incubator center and innovation promotion
4. To foster better linkages between Sahrdaya, industries and R&D institutions in the region and other related organizations engaged in promoting Small & Medium Enterprises.
5. To respond effectively to the emerging challenges and opportunities both at national and international level relating to Technology, Skill Development

IEDC Facilities: Various collaborative facilities promoted by IEDC towards an innovation-friendly entrepreneurial ecosystem development at Sahrdaya.

A dedicated space is utilized as the office of IEDC Nodal Officer, activity/

co-working space and meeting facilities. The space also supports the aspiring entrepreneurs as a preincubation facility.

Engineering Design Studio: This facility will support as a maker room as well as for an ideation ambience. Facility is provided with 3D Printing, CNC milling, Laser engraving, extruder provisions together with other maker tools and a co-working space.



Center for IoT and Robotics Research: The center was established as an exclusive facility for IoT and Robotics with the support of Kerala Starup Mission and E-yanthra initiative of IITB. The center supports the student as well as the faculty community in the focus area.

Organizational Structure of IEDC

Nodal Officer & Coordinator: IEDC Center head and official representative of college regarding Innovation and Entrepreneurship development as per Govt. order (Ref: GO Ms. No: 499/2012/H.Edn dt 11.10.2012)

IEDC Joint Coordinators: Team of faculty members who support the coordinator

IEDC faculty Committee: One faculty representative from each department appointed by Principal

Startup Boot camp: The Government of Kerala has created the “Startup Bootcamp” Program wherein it is envisaged to create a startup ecosystem in each and every college campus through active involvement of the students. Bootcamp is a student-focused program. The Executive Committee shall undertake the day-to-day management of the Startup Bootcamp.

PM YUVA

Sahrdaya is empaneled by the Ministry of Skill Development and Entrepreneurship, Govt. of India for Pradhan Mantri YUVA Yojana (PM YUVA) entrepreneurship education scheme for 5 years with financial support. Two faculty members were trained by the ministry as the facilitators of the program. All the students of the 2016-2020 batch were offered a on “Orientation Program for Entrepreneurship ” course along with the regular time table and provided the based on exam credits certification. The course is delivered in a blended learning mode with activity oriented learning with course contents from Wadhwani Foundation.

SAHRDAYA TECHNOLOGY REVIEW

An yearly magazine published by IEDC which showcase innovation achievements of the institute.

TEDx SahrdayaCET

IEDC conducts an annual TEDx Talks at Sahrdaya. TEDx gives an opportunity to listen from the scholars and an opportunity for students to organise an international flagship event.

18.3 RESEARCH AND DEVELOPMENT CELL (RDC)

Sahrdaya College of Engineering (SCET), Kodakara, is committed in creating an ambience for high quality Research & Development activities in every department by the faculty and students. The college has been recognized as a SIRO (Scientific and Industrial research Organization) under DSIR (Department of Scientific and Industrial Research) which comes under Department of Science and Technology, Government of India. Research and Development Council (RDC) is constituted in the college with Director as the Dean (Research), Joint Director as the Chief coordinator, followed by the Coordinator and representatives from each department as members.



RDC aims to provide a research environment that will promote a culture of high quality research, which is ethical, competent, safe and accountable. The Faculty Research Seed Grant (FRSG) scheme has been introduced to give faculty the chance to define objectives and test hypotheses in preparation for larger grant applications from external funding agencies. The seed data from the projects will give faculty an idea of feasibility and directionality of research before applying for more funds from other sources. 45 faculty members are sanctioned various FRSG projects in 2019 & 2020.

SCET also promotes research through PhD registrations and has twelve KTU approved research guides and eight PhD scholars registered under KTU. Several workshops are also conducted to instill research culture among the faculty.

OBJECTIVES

- To create an environment within the College to build a research culture and to ensure an efficient and effective support system to facilitate faculty and researchers in their research activities.
- Ensure publications in SCI, Scopus indexed/Web of Science journals with impact factor.
- To foster an environment of undertaking socially relevant research with a prospective commercialization value.
- Establish Research Centres of Excellence within the college .
- Encourage partnerships nationally and globally through interdisciplinary collaborations.

18.4 INDUSTRY INSTITUTE INTERACTION CELL (IIIC)

Sahrdaya College of Engineering & Technology recognizes that better interaction between Technical institutions and industry is very essential. The Industry Institute Interaction Cell was started in the college on 3rd September, 2016. Student coordinators who represent every year of each department also be a part of the IIIC team

The function of the Cell is to promote closer interaction between the academia and Industry. Industry Institute Interaction Cell is established to provide closer links with industries by MOUs and MOU related activities. The purpose of the cell is to find out the gap between the needs of the industry and the end product of the institute.

The cell is the bridge between the industry, the real world and the institute. Industrial exposure of the faculty is very much helpful to guide students about the latest industrial practices. Industries are able to know recent developments and inventions in their fields and implement projects for technologically driven economy.

OBJECTIVES

1. Organize Workshops, conferences and symposia with joint participation of the faculty and the industries.
2. Encourage engineers from industry to visit the institution to deliver lectures and arrange visits of staff members to various industries.
3. Encourage Faculty members to use their expertise in solving the problems faced by the industries, thus creating opportunity for consultancy in R&D Laboratories sponsored by industries at the institute.



4. Help students to adapt to an industrial environment.
5. Impart proper practical and relevant knowledge and skill.

18.5 ACADEMIC MANAGEMENT SYSTEM (AMS) (AUTOMATION)

Linways is a fully hosted cost effective and innovative learning management system which provides centralized and automated administration. It is a non-conventional method which supports collaborative learning, creating and delivering learning materials, generating reports, student notifications etc.

Faculty Benefits

- Use course materials previously created.
- Give assignments and assess them online.
- Conduct tests and exams online.
- Put up various notifications and results of tests online.
- Remark on performance of various students.
- Online attendance marking and report generation.

Student Benefits

- Learning convenience.
- Access course materials.
- Submit assignments online.
- Tests appear online.
- Access to results of various tests.
- Evaluate or rate the faculty.
- Easy library access.



19. VARIOUS CLUBS OF SCET

Various clubs are promoted through Innovation and Entrepreneurship Development Cell of the institute for the purpose of developing skill, curiosity, technical confidence, maker culture, self learning, updating knowledge about future technologies and peer skill sharing among the students. All the clubs are funded and coordinated from IEDC. Each club works under a faculty member as advisor and a Student Club Lead.

19.1 Hardware Club

A club focused to introduce maker skills, electronic skills and peer skill- sharing among the students. The Club used to conduct various workshops, hackathons, bootcamps, campus projects and installations. The club is closely associated with the activities at the Center for IoT and Robotics Research.

The goal of the Hardware club is to help to engage students in innovative and creative activities apart from providing opportunities for hands-on activities. The hardware club creates awareness, educates, nurture and inculcate a culture of innovation amongst students and to enable them to generate new ideas and become more innovative.

Mission: To groom students into well rounded personalities by the time they leave college so that they evolve into both respectable professionals and responsible individuals, who ultimately become the true wealth of the nation.

Objectives:

- Explore innovative ideas in the students
- Organize seminar, conference, workshop, exhibitions relating to innovations.
- Develop innovative mindsets and train for entrepreneurship. Provide opportunities and platforms for students, teachers and other members of the society.
- Support and facilitate grassroots innovations.
- Document innovations for different walks of life.
- Collaborate with micro, small and medium enterprises

19.2 Coders Club

“Coding for Everyone” is the motto of the coders club. Under the initiative of coders club a number of Hackathons and workshops are organized and it helps the students to increase employability and entrepreneurship skills. The Club is a platform for students to increase the programming skills. The members usually to participate in various hackathons.

19.3 Creative Club

A club focused on activities to encourage the creative mindset of students. The club create number of art/technical installations at the campus and encourages peer skill sharing. The Club is a platform to try out the creative thoughts of the students.



19.4 Media Club

“Creative Media” is the motto of the IEDC media club. The club serves as a platform of the students to experiment the campus media activities and the club facilitates IEDC towards media and publicity. The club is also collaborating with Channel I’M with an I’M STARTUP STUDIO initiative. The student reporters report various innovations from the campus.

19.5 Future Tech Club

Club aims to create awareness about future technologies such as Artificial Intelligence Augmented Reality, Virtual reality, block chain, brain computer interface and Green Technologies . Future lab of Kerala Startup Mission facilitates the club. Club is acting as a platform for peer-skill sharing and self learning initiative in various next generation technologies.



20. PROFESSIONAL BODIES

• 20.1 INSTITUTE OF ELECTRICAL AND ELECTRONICS ENGINEERS (IEEE)

IEEE, the Institute of Electrical and Electronics Engineers are the world's largest technical professional organization for the advancement of technology. The IEEE Students branch of Sahrdaya College of Engineering and Technology comes under the Kochi Subsection, under the Kerala section of IEEE. Through the activities of IEEE SB of our College, we aim to keep the members up to date with the recent trends in Science, Engineering, and Technological fields. The IEEE SB of our College ensures that all the benefits of being an IEEE member reach all the members in time. By participating in various IEEE events and programs organized in and outside the campus, the members of IEEE gets exposure to new arenas in the field of Engineering and Technology and gets a space to network with eminent people from industry and academia and also to interact with like-minded people of the same age group. IEEE SB of our college has organized lots of programs from time to time, which include TF World Extended Kerala (we hosted Tensor flow Kerala conference), CODE ON (all Kerala series of coding competition), and ML on Fast Track(workshop by Google Crowd-source) to quote a few. IEEE SB of our College is the second in Kerala to start NPS society. And also we have started IEEE-RDC (Research and Development Cell) for helping student projects. Under IEEE SAHRDAYA Student Branch (SB) have the following societies.

1. IEEE - PES (Power & Energy Society)
2. IEEE - NPSS (Nuclear and Plasma Sciences Society)
3. IEEE - CS (Computer Society)
4. IEEE - EMBS (Engineering in Medicine and Biology Society)
5. IEEE - WIE (Women in Engineering)

• 20.2 INDIAN SOCIETY FOR TECHNICAL EDUCATION (ISTE)

The Indian Society for Technical Education (ISTE) is the leading National Professional non-profit making Society for the Technical Education System in our country with the motto of Career Development of Teachers and Personality Development of Students and overall development of our Technical Education System. Being the only national organisation of educators in the field of Engineering and Technology, ISTE effectively contributes in various missions of the Union Government. The strength of ISTE is the strong base it has in technical education institutions in the country. The major objective of the ISTE is to provide quality training programmes to teachers and administrators of technical institutions to update their knowledge and skills in their fields of activity and to assist and contribute in the production and development of top quality professional engineers and technicians needed by the industry and other organisations.

It organizes an annual convention for faculty and students separately every year where a large number of technocrats, technical teachers, policy makers, experts from the industry etc. participate and interact.

Being a multi-disciplinary professional body, ISTE has membership of faculty from all the departments of Sahrdaya College of Engineering and Technology and an institutional membership from the year 2004. Looking towards the benefit and demand from our students we have started ISTE students chapter in the year 2006 in our college to enrich the knowledge and skills of members and to ensure their enthusiasm for engineering.

• 20.3 THE INSTITUTION OF ENGINEERS (INDIA)(IEI)

About IEI The Institution of Engineers (India) [IEI] is a statutory body to promote and advance the engineering and technology, established in 1920 and incorporated by Royal Charter in 1935. It is the largest multi-disciplinary professional body of engineers encompassing 15 (fifteen) engineering disciplines with a Corporate membership of over 2 lakhs, and serving the nation for more than 9 decades. The Institution of



Engineers (India) is a first professional body to represent India in several International Bodies, such as the World Federation of Engineering Organizations (WFEO), the Commonwealth Engineers' Council (CEC), the Federation of Engineering Institutions of South and Central Asia (FEISCA), etc. It also has bilateral agreements with a number of professional societies across the globe. IEI holds the International Professional Engineers (IntPE) Register for India under the global International Professional Engineers Alliance (IntPEA). The Institution also awards the Professional Engineers (PE) Certification. IEI offers membership in different grades from student membership to Honorary Fellow according to the contribution to the field of engineering and technology.

Being a multi-disciplinary professional body, IEI has membership of faculty from all the departments of Sahrdaya College of Engineering and Technology and a student chapter in the Department of Civil Engineering with around 200 student members. The chapter was inaugurated in 2019 and is active in organizing technical events and programs such as expert talks, competitions, etc. to enrich the knowledge and skills of members and to ensure their enthusiasm for engineering.

- 20.4 BIOMEDICAL ENGINEERING SOCIETY OF INDIA (BMESI)

BMESI is to stimulate and aid research and development in all aspects of Biomedical Engineering. The department possesses Institutional membership. It provides a forum for discussing innovative ideas leading to creative inventions and to encourage, promote, and advance interdisciplinary cooperation amongst scientists, engineers.

- 20.5 BIOTECH RESEARCH SOCIETY OF INDIA (BRSI)

The biotech research society, India (BRSI) is a non profit, scientific, professional society dedicated to promote excellence and competence in the field of biotechnology for the benefit of mankind. The society also helps in mediating and setting up industry academic collaborations and interactions. The society also funds institutes for conducting conference and workshops for the awareness and upliftment of new and innovative frontiers of Biotechnology to the academic fraternity and the society in general.

Department of Biotechnology, Sahrdaya College of Engineering and Technology (SCET) Kodakara, Thrissur also became a part of BRSI by initiating a local chapter of the society in the college. This was inaugurated on September 15th, 2018. Sahrdaya became an academic institutional member of BRSI with effect from September 2020.

- 20.6 COMPUTER SOCIETY OF INDIA (CSI)

CSI is a body of computer professionals in India. It was started on 6 March 1965 by a few computer professionals and has now grown to be the national body representing computer professionals. It has 72 chapters across India, 511 student branches, and 100,000 members.

The Computer Society of India is a non-profit professional meet to exchange views and information learn and share ideas. The wide spectrum of members is committed to the advancement of theory and practice of Computer Engineering and Technology Systems, Science and Engineering, Information Processing and related Arts and Sciences. The Society also encourages and assists professionals to maintain integrity and competence of the profession and fosters a sense of partnership amongst members. Besides the activities held at the Chapters and Student Branches, the Society also conducts periodic conferences, seminars.

Sahrdaya College of Engineering and Technology was an active member in CSI for years. The chapter was inaugurated in 2015 and is active in organising various technical events and competitions for providing a platform for the student community to develop and showcase their technical powers and management skills. Currently Student chapter consist of 75 student members.



21. SAHRDAYA COLLEGE OF ALUMNI ASSOCIATION(SECAA)

1. The Sahrdaya College of Alumni Association was started in the year 2006. The scope of the association shall help and support Alma matter in its effort to achieve excellence in technical and professional education.
2. An office of Alumni Affairs (OAA) was established at Sahrdaya college of Engineering and technology to facilitate or alumni, to improve the institute alumni relationship, and to support Sahrdaya Engineering college Alumni association (Reg No TSR/TC/422/2018.)
3. The membership is open to all B. Tech and M. Tech students of Sahrdaya College of Engineering and Technology, Kodakara. It will be given at the time of their exit from the college. Fee for the membership of the association is Rs.1000.
4. The application for membership in the society shall be submitted at the office in the prescribed form and the right to accept it after scrutiny shall be upon the executive committee of the association. The membership of the association is lifelong.
5. Sahrdaya Alumni Merit Fellowship (SAMF) was instituted to give financial support to graduate students to pursue graduate studies.
6. To take alumni feedback on academic activities as per the OBE system followed in SCET.
7. The general body meeting of alumni association is conducted on a regular basis every year and important decisions are taken.
8. Regular alumni student interaction is conducted in order to promote a healthy relationship and to encourage the smooth transition from being a student to becoming an alumnus by helping the two groups connect and collaborate with each other.
9. The alumni meet is arranged every year and alumni members are invited personally to discuss and promote a collaborative effort to fruitful the association.
10. Our alumni are working in various parts of the world. We have Alumni Chapters at USA, Dubai, Bangalore, Chennai, Trivandrum, which are highly active. Alumni associations exist to support the parent organization's goals, and to strengthen the ties between alumni, the community, and the parent organization.
11. The online resources are focused on creating a private social network for alumni or using big networks with the help of Facebook. In addition, the alumni association also tries to promote their official network (Facebook page, Twitter account, LinkedIn group) as the central hub for alumni to connect.



22. SPECIAL FEATURES OF SCET

22.1 WIFI CONNECTIVITY

Sahrdaya College of engineering is well supported by round- the- clock Wi-Fi facility. This high speed internet facility allows the students to access the internet anywhere inside the campus. Seminar halls, labs, conference halls, class rooms, hostel and common areas are Wi-Fi enabled with centralized authentication to allow secure internet access through computers and other Wi- Fi enabled devices.

22.2 GREEN CAMPUS

Sahrdaya College of Engineering is truly a green campus. Now- a- days all people are leading a hectic life and no care is being given to nature and greenery. This leads to unconditional climatic changes. Action now to make our way of life sustainable is our best hope for preventing the worst effects of climate change. Hence by giving importance to our mother earth, Sahrdaya has put forward many plans and the major one is the green campus development. College holds a healthy medicinal garden which is a collection of many plants having high medicinal values. We can also see species which are very rare and going to be endangered. Other key focus areas are solid waste management, water management, energy management etc.

22.3 HOSTELS

Sahrdaya College provides separate hostel for boys and girls. 3 hostels named Shalom, Jyothis and Thejus are allotted for girls and Santhome hostel for boys. We have a separate PG hostel block also. All the hostels are ragging free and it's truly a home away from home. The proper guidance provided by hostel wardens helps the students to mould their character as well as personality. Students can fully concentrate on their studies during hostel life without any kind of worries as they are in the proper hands. Students coming from different areas and having different cultures are living with love, peace and harmony in Sahrdaya hostel.

22.4 CAFETERIA/CANTEEN

In Sahrdaya we have a canteen that serves food for students as well as faculty. Canteen is very clean and hygienic. We have a proper menu of food which is specific for each day. Fixed time schedule is also provided for food delivery. There are also three Snacks bars functioning. One near Decennial Block, one near Bio Block and one near the Canteen. They will serve you the best of delicacies to satiate your taste buds.

22.5 CHAPEL/ SPIRITUAL DEVELOPMENT

Spiritual information can serve to understand our life better and to achieve our purpose of life more easily. The spiritually mature will be able to "distinguish good from evil. In order to enhance the spirituality among Sahrdayans we have a chapel . Every day the holy mass is being celebrated in the chapel under the guidance of Fathers and Sisters. We also conduct holy rosary everyday and adorations on every Mondays and Thursdays. We have an excellent choir team and an active Jesus Youth wing.

22.6 ATM

An ATM counter set up by the South Indian Bank is available in the administration block of the college.

22.7 FITNESS CENTRE

A student not only wants to be mentally strong but also he/she should be physically fit. There are well equipped physical center separately for boys and girls. Proper guidance is provided by the fitness trainers. It is open during morning and evening hours.

22.8 LANGUAGE LAB

Each student spend 1 hour in the language lab. There are 2 batches in each class and one batch alternatively will get a chance every week to train themselves in the language lab. They are given separate systems and separate head phones. Total of 30 nodes are available in the Language Lab. Speaking, Listening, Writing and Reading sessions are conducted to improve these skills.



22.9 AUDITORIUM

We have a well-built auditorium with a maximum occupancy of 3000. All the major programmes like different ceremonies, personality development classes, orientation classes, awareness classes etc. are being conducted over there. It is also being utilised as an indoor unit for playing badminton in the evenings. It holds a number of green rooms separately for boys and girls.

22.10 REPROGRAPHIC CENTRE

We have three reprographic centres in the college campus which are located at bio block, decennial block and at auditorium.

22.11 COLLEGE BUS

College buses are plying between the College and nearby cities touching all the major places in Thrissur district. Students and staff can avail this facility.

22.12 STAFF QUARTERS

The accommodation for the faculty members is provided in the quarters that are being located in the campus vicinity itself. It holds a total of 12 flats.



23. STUDENT SERVICE FACILITIES

23.1 ADVISORY SYSTEM

Sahrdaya College of Engineering and Technology has an excellent mentoring system to help the students in their endeavors. The well-experienced faculty mentors act as guides and close enough to elicit key information professionally to show students the right path in all-round development. The College implements mentoring of students right from the first semester until the completion of the programme for their academic, professional, and personal augmentation.

Number of faculty mentors : 3 mentors per class

Number of students per mentor : 20 students on average

Frequency of meeting : Twice in each Semester

Advisor Support

The College has a mentorship program “Faculty Advisory System” in every academic year. A “Student Datasheet” is maintained to record the students’ details. It is a continuous process where faculty mentors serve as Faculty

Advisors to nurture and provide support to the allotted 20 students on average. One of the faculty members of the department is given charge of Class Teacher. Faculty who is allotted as second-year advisor continues for the same student team throughout the programme. Faculty Advisors take care of all the matters related to academic performance and the personal grievances of every student. They collect all the details, including academic and personal information. This enables the advisor to understand the family, social, economic and academic background, skills, and career advancement. A student record is maintained and a summary of all the activities is recorded.

Advisors assist their students in the following ways:

- Provide academic counselling
- Give personal and professional guidance
- Support students in choosing course work that meets their needs and interests
- Accompany during Industrial Tour and support in co-curricular and extra-curricular activities
- Arrange remedial measures if the student is at risk of failure (T4S – Teacher for Student, S4S –Student for Student).
- Identify those with learning difficulties and personal problems and advise appropriate action.
- Appreciate the students and parents for their achievements/honours/ social commitments.
- Essential counseling is provided to those students with low/irregular attendance, poor academic performance and other reported pitfalls. Further, the academic performance and attendance of very weak students are communicated to their parents over the phone.
- Act as virtual on-campus guardians of students under their Advisorship and visit needy student’s houses, especially during unnatural situations such as flood havoc, illness, death of Parents / injuries etc.
- After every Continuous Assessment Test (CAT), a meeting is arranged together with Faculty Advisors, Parents/Well-wishers and students to discuss the progress of the students. A progress report will be given to the Parents.

23.2 COUNSELING FACILITY

Professionally qualified counselors (Male – 1 & Female -2) are available from Monday to Thursday throughout the academic session. It helps the students to gain the confidence to utilize their full academic and personal potential to achieve goals. Counselors empower them with appropriate attitude & aptitude. Separate counseling rooms are provided in the administrative block. Counselors meet each student by



recording the student's details in their respective registers and case of any special issues, and follow-up is also recorded. The counseling record is kept confidential.

23.3 MEDICAL CONSULTATION

Medical Consultation facility is made available in the college, wherein the doctor Dr.Sr.Rita from S.H Hospital, Pullur visits once in a week. The date of the visit is informed to a student earlier and also on the same day in the morning assembly.

Any emergency medical case is taken to Santhi Hospital (2 km) away. If required, the patients are taken to St. James Hospital, Chalakudy, where priority is given to staff and students since the hospital belongs to the same management. The hospital also offers a 10% discount on the medical bills to the needy staff and students. An MoU is signed for the same with the Director, St.James Hospital, Chalakudy.To procure an ambulance from the CSR fund of South Indian Bank, Kodakara, the procedure is under process.

23.4 YOGA

Yoga is a practice that uses posture and breathing techniques to induce relaxation and improve strength, better concentration throughout the day and its health benefits may surpass those of any other activity. Hence, from the inception, the college has arranged yoga sessions once in a week for first-year students, and the schedule is put in the time-table. Dr.Sr.Ancy is appointed by the college to conduct yoga classes. Also, yoga sessions are arranged at the beginning of the academic year for faculty/staff, which results in a sense of inner peace and mental, physical relaxation.

23.5 EXTRA CURRICULAR ACTIVITIES

Students can indeed expect to benefit from a holistic learning environment existing in the college. There are student activities to enrich the social, cultural and sporting interests of students. All students are welcomed to join these activities as it enables them to broaden their horizons through the exchange of experiences and to showcase the talents among the entire student community.

23.6 COMMUNITY DEVELOPMENT PROGRAMME

The institute will undertake programmes in association with local bodies to improve the life of the underprivileged and less fortunate sections of the society.

23.7 PARENT TEACHER WELL-WISHER ASSOCIATION

Periodic interaction with the parents will be arranged to monitor the progress and development of their wards. Seminars meant to enhance awareness of the problems and issues of the adolescents and parenting will be organized.

23.8 ANTI-RAGGING CELL

Ragging in all its forms is totally banned in this college including in its departments, constituent units, all its premises (academic, residential, sports, cafeteria, etc.) whether located within the campus or outside and in all means of transportation of students whether public or private. The college shall take strict action including but not limited to criminal proceeding and/or cancellation of admission against those found guilty of ragging and/or of abetting ragging and the burden of proof shall hereby lie on the perpetrator of alleged ragging and not on the victim. An offence of Ragging may be charged either on a written complaint by the affected or on independent finding of the Anti Ragging Cell.

The Anti-ragging Committee has been constituted in the college for the security of students and to inculcate the sense of humanism and equality among students. The Principal is the Ex-officio Chairman of the Committee. Administrators, HoDs from all branches, TPO, hostel wardens, PTA member, student chairperson from the Students Union, Circle-Inspector of Police of nearby Police Station and press representative are the members of the committee.

23.9 DISCIPLINARY COMMITTEE

The institute has constituted a disciplinary committee to impart social and ethical values among the students and to maintain disciplined environment for studies with a motive to produce law abiding and



disciplined engineers for the nation. The understated are the guidelines for the students which must be followed:

1. All the students are warned not to leave the Hostel / Classroom /Campus without the prior permission of the concerned Warden /HOD /Faculty.
2. The Students are directed not to indulge in any type of intoxication.
3. Further the Students are warned to abide by the rules and regulations of the college and the hostels for maintaining discipline in the campus.
4. The Students who are found to violate the conduct rules of the college/Hostel, disciplinary action will be taken against those students

23.10 GRIEVANCE REDRESSAL & APPEALS COMMITTEE

The college has a grievance redressal mechanism and system in place. Decentralized functioning being quite effectively practiced to take care of any major grievance, a central grievance redressal committee is constituted. The redressal of majority of the grievances is taken care of by the grievance redressal and appeals committee. The objective of this cell is to develop a responsive and accountable attitude among all stakeholders in order to maintain a harmonious educational atmosphere in the institute. Any issues related to grievances may be communicated through college website as well as in Linways Software, a link is made available to post students grievances. When students register their complaints, they are being referred to corresponding department/sections by Grievance Redressal Committee convener for timely resolution.

Contact No: 7025591110

Mail ID: studgrievsah@sahrdaya.ac.in

23.11 INTERNAL COMPLAINTS COMMITTEE

This Cell was formed to address all issues related to well being of women students and staff members and to conduct expert talks and programs on related issues. "She Care" , a ladies store is functioning in the Administrative Block . In connection with the International Women's day, a series of talks by eminent women is arranged.

Contact No: 7025591110 ; Mail ID: intcomsah@sahrdaya.ac.in

23.12 STUDENT WELFARE COMMITTEE

The committee is meant for the welfare of students. The main objectives of the committee include conducting orientation program for first year students, issuing of college ID cards and any other items raised by the members. It also aims in developing cleanliness and behaviour in students from first year onwards. Under this committee, a counsellor is nominated to mentor students having family problems and other issues so as to improve their mental as well as physical well-being.

FOR ANY GENERAL INFORMATION

Contact No: 04802759275; Mail ID:

info@sahrdaya.ac.in&info.sahrdaya@gmail.com;



24. ADMINISTRATIVE COMMITTEES

1.	Internal Quality Assurance cell (IQAC)
2.	Program Coordinators (PCs)
3.	ISO
4.	Placement & Training
5.	Research & Development Center (RDC)
6.	Innovation & Entrepreneurship Development Cell (IEDC)
7.	Industry Institute Interaction Cell (IIIC)
8.	Anti-Narcotic, Anti-Alcoholic, Anti-Tobacco cell
9.	Library
10.	Scholarships & Awards
11.	NSS & Social Service
12.	Sports
13.	Academic Management System (AMS) (Automation)
14.	Website
15.	Counselling cell
16.	Alumni relations
17.	Fine arts
18.	Literary
19.	Public Relation (PR)
20.	Admission
21.	College Magazine
22.	College Newsletter
23.	Internal exams
24.	University Examinations
25.	Staff Advisor to Students Council
26.	Staff Council
27.	Time Table
28.	Department Associations in charge
29.	College Council and Other elections
30.	PTWA coordination
31.	Professional Bodies (IEEE, ISTE, IEI)
32.	Internal Academic Audit (KTU)
33.	University Valuation Camp
34.	General Programs
35.	Arrear tracking & Result Analysis Committee



36.	Academic Calendar, Sahrdaya Calendar
37.	College Choir
38.	Hostel Committee
39.	Purchase committee



25. SCHOLARSHIPS AND ENDOWMENTS

The Management of Sahrdaya gratefully acknowledges the benefactors and well - wishers who generously contribute for instituting endowments and scholarships so that the toppers in University exams and achievements of students could be recognized with cash awards. We have a total of 39 endowments in various departments and 9 scholarships which are given away to good achievers and deserving students after a strict evaluation. The endowments are instituted with eligibility criteria which are clearly laid out. The prizes are rewarded to students on the College Day.

The general endowments are listed below.

Sl.No	Name of the Endowment	Name of the sponsor/Amount deposited	To be awarded to whom	Branch and Class
1.	Dr. Jose Ukken Endowment	Dr. Jose Ukken, Modern Hospital, Kodungallur / Rs. 5000	Best all rounder	EC
2.	Mrs. Annie Ittop Endowment	Ms. Annie Ittoop, Selection Grade Lecturer, Sacred Heart College, Chalakudy/ Rs. 5000/-	Best all rounder	CS
3.	Mr. P .D. Jose Endowment	Mr. P. D. Jose, Asst. Professor, Sahrdaya College of Engineering & Technology / Rs.5000	Best all rounder	BM
4.	Dr. Joseph Alexander Endowment	Dr. Joseph Alexander, Kadavil, Irinjalakuda / Rs.5000	Best all rounder	BT
5.	Pulickan Family Endowment	Mr. Davies P.C, Civil Dept/ Rs.10,000	Best all rounder	CE
6.	Narayana Iyer memorial Endowment	Mr. Narayanan, Southern Enterprises, Tripunithura/ Rs. 10000	Best all rounder	EEE
7.	Anu Ashar Memorial Endowment	Mr. Asuhar, Thrissur / Rs. 5000	Best Final Year student	BT, 8 th Sem
8.	Rev. Fr. Varghese Pathadan Endowment	Dr. C. Balagopalan/ Rs. 5000	Best all rounder in BT	BT, 8th sem
9.	Sr. Annie Elvina Memorial endowment	Jemcy Antony, Rose Paul, Sini P.D, Swapna Joseph, Dr. Geetha K.V / Rs. 10000	To the top student in Eng. maths 1,2,3,4 combined	8 th Sem B.Tech (any branch)
10.	Chancellor Viswanathan Gold Medal	Vice-Chancellor, Vellore Institute of Technology, Rs.25,000	Best outgoing student at Graduate level.	8 th Sem B.Tech (any branch)
11.	Chancellor Viswanathan Gold Medal		Best outgoing student at Post-Graduate level.	4 th Sem M.Tech (any branch)
12.	Kanichai Thomas Jose Educational and Charitable Endowment	K.T.Jose/ Rs.5000	Top student in Mtech IBT 1&2	S4 M.Tech IBT
13.	V.L. Ittiachan Endowment	Mr. V. L. Ittiachan, Merlin Group, Thrissur / Rs. 5000	Considering CGPA	BT, 8 th Sem



14.	Dr. Palatty Jacob Jose Endowment	Mrs. Reshma Anoop/ Rs.5000	Considering CGPA	BM,8 th Sem
15.	Dr. Sona Endowment	Mr. Swapnakumar/ Rs. 5000	Considering CGPA	CS, 8th SEM
16.	Sathyam, Shivam, Sundaram Endowment	Mr.A.Balan/ Rs.5000	Considering CGPA	EC, 8th SEM
17.	Sr. Franco Memorial Endowment	Prof. Savithri Lakshmanan, Krishnakripa, Peshkar Road, Irinjalakuda680121	Considering CGPA	CE, 8 th Sem
18.	Prof.Dinakaran Endowment	Prof.Dinakaran,HOD,EEE Dept.	Considering CGPA	EEE, 8 th Sem
19.	Dr. C. Balagopalan Endowment	Rs. 5000	Considering CGPA	BT, 6th Sem
20.	Mrs. Annie Jose Endowment	Mr .P .D Jose / Rs. 5000	Considering CGPA	BM, 6th Sem
21.	Ms. Bensusitha Endowment	Mr. Bensusin / Rs. 5000	Considering CGPA	CS, 6th sem
22.	Varkey Kottekaly Memorial Endowment	Prof. Thressiamma/ Rs. 5000	Considering CGPA	EC, 6th sem
23.	Pakalomattom Endowment	Prof. Mercy, EEE dept/Rs.10000	Considering CGPA	EEE, 6th sem
24.	P.L. Chacko Memorial Endowment	Mr. Davies P.C, Civil Dept/ Rs.10,000	Considering CGPA	CE, 6th sem
25.	Dr. George Thottapilly Endowment	Dr. George Thottappilly, Teekay Villa, Karoor./Rs.5000	Considering CGPA	BT, 4th Sem
26.	Mr. V.K. Joseph , Vazhapilly Endowment	Dr. V.J.Paul/ Rs. 5000	Considering CGPA	BM, 4th Sem
27.	Malu Endowment	Prof. V.A. Sudhakaran, Civil Dept./ Rs.10000/	Considering CGPA	CE, 4 th sem
28.	G. Sasidharan Memorial Endowment	Mr. S. Pramod/ Rs. 5000	Considering CGPA	CS, 4th Sem
29.	Thomas Joseph memoriam Endowment	Prof. K.T. Joseph/ Rs. 5000	Considering CGPA	EC, 4 th Sem
30.	Fr. Jino Malakkaran endowment	Fr.Antu Alappadan	Considering CGPA	EEE, 4 th sem
31.	Mr. George Valavi Endowment	Mr. George Valavi / Rs.5000	Top student in 1 & 2 semester Uty. Exam. Eng. Chemistry	4 th sem
32.	Vailoppilly Subrahmanian Master Memorial Endowment	Prof. Nithyadas/ Rs.10,000	Topper in I&2 Eng. Physics Exams	4 th Sem
33.	Dona Treesa Endowment	Mr. Johny/ Rs. 1,00,000/	Topper in I&2 Uty Exams(BT)	4 th Sem, BT
34.	Seethakutty & Madhava Menon Memorial Endowment	Dr. Surendra Nath/ Rs. 5000	Author of the best article in College Magazine	
35.	Dr. George Thottapilly memorial Endowment	Rs. 1,25,000	To conduct lecture series	
36.	Xavier Joseph Kanakkacherry Memorial Endowment	Prof. Joseph Justin/ Rs.5000	Kalaprathiba	



37	His Royal Highness OBA OLATUNDE FALABI LANBELOYE III Endowment	Rs. 10000	To the members of the final year best project in BT	
38	A.P. Paul Master Memorial Endowment	Prof. Vince Paul/ Rs. 5000	To the members of the final year best project in CS	
39	Melvin P David Endowment	2009 Alumni EC Batch (Jisho, Sunil and friends) / Rs.40,000	Considering CGPA & Financially weak students	One student in every batch

IDET BUDDING ENGINEERS SCHOLARSHIP:

The IDET Budding Engineers Scholarship was instituted in the year 2010 in honour of the Founder Chairman, IDET, Mar James Pazhayattil. The scholarship is offered to the first 100 rank students who join B.Tech program in Sahrdaya as per the norms of the Government and Kerala Catholic Self Financing Engineering management association. The first five rank holders in the IDET Scholarship Examinations are given cash prizes on College Day.

DIAMOND RING AWARD

The prestigious Diamond ring award is given to the best all round student of the college during every academic year. The Diamond Ring is sponsored by Mr. P.P. Sunny, Sunny Diamonds, Chalakudy. The Winner is selected by considering their conduct, character, academic excellence and extracurricular activities. Details are as follows :

- Conduct and character- from Class Animator and HOD
- Academic Excellence- by considering the aggregate marks of all the University Examinations
- Extracurricular activities- Collected from the students with proof

The details of Scholarships provided are as listed below:

DIFFERENT TYPES OF SCHOLARSHIPS AVAILING BY STUDENTS				
1	Management	Sahrdaya College Management	Selected students based on merit and financial constraints	25000/- to 75000/-
2	IDET	Irinjalakuda Educational Trust	IDET Entrance top rankers	Scholarship based on merit and financial constraints
3	KCECMA	Kerala Catholic Engg College Management Association	Based on income & Merit	Sanctioned scholarship amount: Rs.300000/- BPL students avail 75000/-. Remaining sanctioned amount will be disbursed to the candidates based on merit and income.
4	Tuition Fee Waver (TFW)	Controller Of Entrance Examinations	Highest Rank with 8.00 Lakhs income limit	Rs.74000/- per Year
5	SC/OEC/FC/SE BC	SC/ST Department	SC/OEC/FC/SEBC Category Students	Full Fees



6	Merit cum Means Scholarship	Ministry Of Minority Affairs	Minority Students with 50% marks & Income below 2.05 lakhs	Rs.25000/- for Day scholar & Rs.30000/- for Hostlers
7	Central Sector Scholarships	Department of Higher Education	80% marks & Income below 4.05 lakhs	Rs.10000/- per Year
8	Prime Minister's Scholarships	Ministry of Home Affairs	Prime Minister's Scholarship Scheme For Central Armed Police Forces And Assam Rifles	Rs.25000/- to Rs.30000/-
9	PRAGATHI Scholarships	All India Council for Technical Education	All India Council for Technical Education	Rs.30000/- to Rs.50000/- per Year



26. ADMISSION PROCEDURE AT SAHRDAYA

26.1 FOR COLLEGE / MANAGEMENT MERIT SEAT

- » The admission will be on the basis of MERIT ONLY by adding the marks obtained in the Kerala Engineering Entrance Examination conducted by Commissioner of Entrance Examinations, Kerala and the marks obtained for Mathematics, Physics and Chemistry in the qualifying examination (PLUS TWO).
- » The marks will be apportioned in the ratio 50:50
- » The merit list will be published on the college WEBSITE and candidate will be called for centralized allotment in the order of Rank. The allotment schedule will be published on the WEBSITE

26.2 FOR GOVERNMENT SEAT

- » Take up Kerala State Engineering Entrance Examination for the Current Year and Qualify in Examinations
- » Submit Online Option for allotment to Sahrdaya in the Centralized Allotment Process (CAP) through website of Commissioner of Entrance Examinations- www.cee.kerala.gov.in
- » Register your FIRST option to Sahrdaya College of Engineering and Technology, CODE - SHR

26.3 FOR NRI SEAT

- » For admission in NRI seats you may register your name to the college office in the month of January onwards.
- » NRI Fees
- » Government Approved One time NRI Fees USD 6000* or Rs. 3 Lakhs*
- » Semester fee is same as Govt./Management Merit Seat

*Fee to be paid through NRI Cheque

Contact Details: 9061115664, 0480-2759275;

Mail id : admission@sahrdaya.ac.in

26.4 CRITERIA OF ELIGIBILITY FOR ADMISSION TO B.TECH COURSES

26.4.1 FOR GOVERNMENT MERIT & MANAGEMENT MERIT SEAT

- The candidates should qualify the Kerala Engineering Entrance Exam of current year, conducted by the Commissioner of Entrance Examination , (CEE) Kerala (For Govt Merit) or 26.4.2 JEE (For Management Merit – KEAM/JEE)
- Candidates who have passed higher secondary examination, Kerala or Examinations recognized as equivalent thereto, 45% marks in Mathematics, Physics and Chemistry put together are eligible for admission.

26.4.3 FOR NRI SEAT

- The candidates need not qualify the Entrance Exam. Plus two marks shall be as above.



FEE STRUCTURE (2021 ADMISSIONS)

B. TECH

FIRST YEAR (AT THE TIME OF ADMISSION)	
Admission Fee	Rs. 500.00
Tuition Fees	Rs. 75,000.00
Caution Deposit	Rs. 10,000.00
Value added courses and special facilities fee	Rs.10,000.00
KTU admin & sports affiliation	Rs. 2250.00
Total Fees (First Year)	Rs. 97,750.00

SECOND YEAR TO FOURTH YEAR * (TO BE PAID AT THE BEGINNING OF EVERY YEAR)	
Tuition Fees	Rs. 75,000.00
Value added courses and special facilities fee	Rs.10,000.00
Total Fees	Rs. 85,000.00

M.TECH

FIRST SEMESTER (AT THE TIME OF ADMISSION)	
Admission Fee	Rs. 500.00
Tuition Fees	
For Sahrdaya Students	Rs. 30,000.00
For Non Sahrdaya Students	Rs. 35,000.00
Caution Deposit	Rs. 5,000.00
KTU admin & sports Affiliation	Rs 2500.00
Total Fees (First semester)	
For Sahrdaya Students	Rs. 38,000.00
For Non Sahrdaya Students	Rs. 43,000.00

SECOND SEMESTER TO FOURTH SEMESTER* (TO BE PAID AT THE BEGINNING OF EVERY YEAR)	
Tuition Fees*	
For Sahrdaya Students	Rs. 30,000.00
For Non Sahrdaya Students	Rs. 35,000.00



27. STUDENT GUIDELINES



28. APJ ABDUL KALAM TECHNOLOGICAL UNIVERSITY

COURSE REGULATIONS OF B.TECH- ENGINEERING DEGREE COURSES

28.1 ATTENDANCE

Attendance is marked for each course. 75% attendance is mandatory for writing the end semester examination in that course.

Under unavoidable circumstances students are permitted to take leave. Leave is normally sanctioned for any approved activity taken up by students outside the college covering sports and other extracurricular activities. Leave is also permitted on medical grounds or on personal exigencies. Leave of absence for all these is limited to 25% of the academic contact hours for the course. In case of long illness or major personal tragedies/contingencies the college; Principal can relax the minimum attendance requirement to 60%, to write the end semester examination. This is permitted for one or more courses registered in the semester. Principal will keep all records which led to his decision on attendance, for verification by the Academic Auditor. However, this concession is applicable only to any two semesters during the entire programme. In case of prolonged illness, break of study is permitted.

28.2 ACADEMIC ASSESSMENT/ EVALUATION

Academic Evaluation of Courses : University follows a continuous academic evaluation procedure. Academic evaluation composes of internal evaluation and end semester examination. Academic evaluation procedure and corresponding weights are as follows:-

- For theory courses: -
- maximum marks for internal evaluation : 50
- maximum marks for end semester examination : 100
- Internal evaluation marks are awarded as follows.
- Two internal tests of 1 hour duration conducted by the college : 40 (20 marks for each test)
- Tutorials/Assignments/Mini Projects carrying 10 marks. (Internally by the College) : 10

All the above evaluations are mandatory requirements to earn credits. Students who have missed either the first or the second test can register with the consent of the faculty and the Head of the Department (HoD) concerned for a re-test which will be conducted soon after the completion of the second test, but before the end semester examination. The re-test will cover topics of both the internal tests. Those who have missed both the tests are not eligible to appear for the end semester examination. However, if one misses both tests due to medical reasons or other personal exigencies, based on genuine evidence, a single test of 2 hour duration for 40 marks will be conducted covering the whole syllabus, before the end semester examinations. Decision on this will be taken by the Principal and verified by the external academic auditor.

For Laboratory /Practical /Workshop courses

- (i) Practical records /Outputs 60 marks (Internally by the College)
- (ii) Regular class Viva 10 marks (Internally by the College)
- (iii) Final practical exam 30 marks (Internally by the College)

All the above assessments are mandatory to earn credits. If not, the student has to complete the course/assessments during his free time in consultation with the faculty members. On completion of these, grades will be assigned. In case the Practical / Laboratory/ Workshop courses are not completed in the semester, grade I (incomplete) will be awarded against the course and the final grade will be given only after the completion of the course/ assessments.

28.3 COMPREHENSIVE EXAMINATION

As students appear for placements from seventh semester onwards, comprehensive examination is to be



completed in the sixth semester. This examination consists of two parts. A written test and an oral one. The written examination will be objective type of 1 hour duration and will have 50 marks and will be conducted by the concerned department. Chairman of the oral examination board will be a senior faculty in the department and the members include two other faculty members of the department and an external expert from another academic institute or an industry. Oral examination will carry 50 marks. Comprehensive examination may be conducted any time during the 6th semester.

28.4 SEMINAR

Each student has to give a seminar on a professional topic of current interest in consultation with the faculty member in charge of the seminar in the Department. Students have to prepare a detailed report on the topic of the seminar and submit it to the teacher concerned. The seminar is to be of 20 minutes duration with another 5 minutes given for questions and answers. All students in the class have to attend the seminar without fail. Evaluation will be based on the report, seminar presentation as well as on the ability of the student to answer the questions put forward. Faculty member in charge of the seminar and another faculty member in the department nominated by the Head of the Department are the evaluators for the seminar. Distribution of marks for the seminar is as follows.

Marks for the report: 30% , Presentation: 40% ,
Ability to answer questions on the topic: 30%

28.5 DESIGN PROJECT

Each student or a group of students has to take up a design project. The project topic could be arrived at in consultation with any faculty member in the department. The Evaluation of the project will be done in two stages. Two project progress evaluations, each carrying 20 marks and a final report evaluation and presentation of the project for 60 marks. The project supervisor and two other faculty members from the same or any other department, nominated by the Head of the Department form the evaluation board.

28.6 FINAL SEMESTER PROJECT

Students, either individually or in a small batch not exceeding four, have to do a project approved by their faculty supervisor. The preliminary work of the project is to be started in the seventh semester. Evaluation scheme is given below:- I. Two progress assessments : 20% by the faculty supervisor/s II. Final Project Report : 30% by the Assessment Board III. Project presentation and Viva : 50% by the Assessment Board If the project work is not completed satisfactorily, the student has to put in more work and appear again for assessment on a specified date, not earlier than one month after the first evaluation. If the student fails in the project, a fresh registration for the project for one semester is mandatory.

28.7 ELIGIBILITY FOR WRITING THE END SEMESTER EXAMINATION AND FOR GRADING

Important: The main eligibility criteria for appearing in the end semester examination are

- (i) Minimum 75% attendance in each course,
- (ii) Minimum 45% internal marks for each course and
- (iii) No pending disciplinary action.

Students who do not meet the above eligibility criteria are awarded an FE grade and have to register for summer courses, if eligible or for the regular course again at the next opportunity.

A student should have a minimum of 45% marks in the end semester examination to be eligible for grading in a course. Otherwise he/she will be considered to have failed in the course and an F grade will be awarded.

Internal marks given to the students who got 45% marks or more in the end semester examination shall be regulated in line with the end semester examination performance. Internal mark percentage shall not exceed 25% over the end semester mark percentage. (For example if the end semester mark percentage is 45, then the maximum internal mark percentage is to be $45+25 = 70\%$.) In case the student writes the supplementary examination, the mark got in that will be taken into consideration for regulating the internal marks. Those who have more than 45% marks in the end semester examination are awarded the grade based on both internal assessment and end semester examination marks. A student earns credits for a course if the grade is P or above.



29. COLLEGE ETIQUETTE

29.1 COLLEGE TIMINGS

The regular class timing is from 08.45 am to 3.45 pm. The students should report in the classroom by 08.30 am after assembly. We follow 6 days a week working system excluding Sundays, 2nd Saturdays and 4th Saturdays.

29.2 DRESS CODE

- Boys are expected to dress in formal shirts, trousers and shoes unless specified otherwise. Embroidered shirts, jeans, T-shirts, traditional dress or anything short of full trousers are not considered formals.
- Girls are expected to dress in formal salwar suits. T-shirts, jeans, short tops, short skirts, or traditional/ethnic dress are not considered formals.
- There may be certain days designated as non-formal days when the students are allowed to come in informal wear. However, clothes worn to college must always be within the boundaries of decency. Clothing must not be revealing, distracting or gang related. Any staff member has the authority to refer the student to an administrator for inappropriate dressing. The relaxing of the rules is not to be viewed as the right to dilute the attitude of professionalism which we are trying to inculcate in the students.
- These days should be viewed as a privilege and not as a right, and shall be at the discretion of the college administration. Students have to wear their formal uniform when formal functions are organized and on other days specified by the Institute.
- Note: Violation of the dress code will be treated as a misconduct that would attract censure (written reprimand that may include the possibility of more severe disciplinary sanctions for continued misconduct).

29.3 MORNING ASSEMBLY/ANTHEM /PRAYER

- The morning assembly which includes a prayer, Reading from Holy script, Thought that motivate students, message by a faculty and announcements by Director are held every day at 8.45 am. Students are required to give due respect to the assembly by concentrating and keeping silence.
- All students must stand at attention when they hear the college anthem being sung.

29.4 DISCIPLINE

Two 15 minutes short breaks and a lunch break of 55 minutes are given to students on a typical working day. They should not move out of the premises during this time.

- The premises of the institute are an English Zone, which means that all verbal interactions of students must be in English. This is not to demean vernacular languages but to make a conscious and concerted attempt to improve English communication skills of the students.
- Students can meet faculty members with prior appointment to ensure their availability. No student is allowed to enter the rooms of the faculty members when they are not present unless written permission has been given by the respective faculty member.
- Faculty members close the classroom door as soon as they enter for their session.
- Students are expected inside the classroom before the faculty arrives.
- Students must refrain from using profanity or vulgarities.
- Students should not use electronic devices in the classroom, library, offices, auditorium, and



conference halls or in any other areas used for instruction during class time without the consent of the faculty in charge.

The Institute supports healthy relationships among students that are based on mutual trust and respect and are built through good communication.

29.5 CONSERVE COLLEGE PROPERTIES

- Students have to take responsibility for the upkeep of the classrooms, laboratories, furniture, audio-visual equipment, electrical fittings and the corridors. Breakdown or damage to any property shall be intimated to the college office for repair and maintenance. It is desirable that the details are recorded in the maintenance register kept in the office and the officer in charge of all classroom infrastructures is intimated so that the repair takes place in time.
- Any breakdown or damage to any property caused by a student will result in restitution (time, money, service) and/or disciplinary actions of a more serious nature.
- Students are financially responsible for all items issued to them by a staff member. Debts must be cleared before records can be released.

29.6 IDENTITY CARDS

- Students are issued Identity Cards by the Institute. It is compulsory that students wear their Identity cards when they are inside the campus. Loss of this card must be intimated to the institute office immediately. Students should surrender their ID cards after their course of study in the institute.
- Note: Students without identity cards would attract disciplinary probation (exclusion from specific services or participating in privileges/extracurricular activities as set forth in the notice of disciplinary probation for a specified period of time).

29.7 RAGGING

- Any kind of ragging, intimidation or aggressive behaviour is forbidden
- Students who have experienced any kind of ragging, intimidation or aggressive behaviour can immediately bring it to the attention of a faculty member of the institute who would initiate appropriate action.
- Any violation of this rule shall constitute a criminal act and shall be dealt with under the provisions of Kerala Prohibition of Ragging Act 1998 which may result in criminal prosecution.
- Note: Students are requested to read the Anti-ragging regulations of the AICTE

29.8 COMPUTER LAB RULES

For the smooth functioning of the Computer lab, all students are advised to pursue the following rule

- The students are allowed to use the system during lab hours and interval time (9.00 am to 4.00 pm). For the usage during other time, permission from the principal is needed.
- All the students should make their entry in the Login Register.
- The USB drives and other peripherals should not be used without the prior knowledge of lab assistants.
- At the end of each class, students must shutdown the systems, switch off the monitors and arrange the chairs.
- Students are not supposed to bring any sort of edibles in the lab.
- No group activity, playing games and nonacademic activities are allowed in the lab.
- Do not install or download any software or modify or delete any system files on any lab computers.
- Respect the equipment. Don't damage, remove, or disconnect any labels, parts, cables, or equipment.
- Removable drives are strictly prohibited in the lab. Can use only with prior permission.



- If you leave the lab, do not leave your personal belongings unattended. We are not responsible for any theft.
- College ID Card is compulsory for using the computer lab

29.9 GENERAL CODE OF CONDUCT

Every student is required to adhere strictly to the code of conduct of Sahrdaya College of Engineering and Technology, Kodakara as detailed below. To this end, it is necessary that every student understands the rules and regulations framed as part of code of conduct.

- Maintain socially accepted standards of morality.
- Don't possess, consume or distribute alcohol, tobacco or harmful drugs (illegal narcotics) on or off campus.
- Show proper respect and courtesy to your fellow mates, teaching and non teaching staff on or off campus at all times.
- Abide by all the administrative and academic rules of the institute which are already set and put in practice or can be made as and when required, accepting the decision of Sahrdaya as final in all respects.
- The head of the institution reserves the right to suspend/ dismiss any student if it is felt that the continuance of the student in the institute is detrimental to the proper functioning / interest of the institute.
- Vehicular traffic is restricted inside the campus. The students using their own vehicles should park their vehicles in the student parking area.



30. HOSTEL RULES

ADMISSION

It is preferred that all the students stay in the hostel. No one will be allowed to stay outside in rented house/lodge or such places. The admissions to the hostel are made at the time of admission to the course. The Hostel authorities reserve the right to admit or reject any application without giving any reason.

FEE STRUCTURE

- The hostel fee has two components, viz., the mess fee and the rent. The rent is collected in advance annually and the mess bill per semester.

MESS

- Men's hostel and ladies' hostel have separate sections for mess. Appropriate rules regarding management of mess will be framed by the concerned mess management committee.
- A student is eligible to get his transfer certificate, conduct certificate, mark list etc. from the institute when she/he leaves the institution only after she/he produces a 'No Dues' certificate from the Hostel Warden.

ELECTRICITY

- If students are found wasting power or using equipment in his/her room that is not permitted by the Hostel Warden, they shall be fined depending upon the history or gravity of the act.

CLEANLINESS

- All the hostel inmates should keep rooms, verandas, toilets and hostel premises absolutely clean and tidy. The inmates should clean their rooms at least once in a week without fail.
- Inmates are not allowed to hang clothes outside the rooms, especially on handrails. They should make use of the shed provided for it.
- Don't throw any waste items through the windows. Put them only in the dustbin.

LANGUAGE

English should be strictly used in the hostel and in the campus for communication.

VISITORS

No visitors are allowed during the working hours and study time.

No visitor is allowed to be taken to hostel rooms.

Visitors should be received only in the parlour of the hostel with the permission of the hostel warden / Assistant warden.

PRAYER LIFE

Hostlers are supposed to spend every day some time for prayer. Common night prayer is compulsory to all.

- All Catholic students should attend Rosary every day as scheduled. During this time, others can go to the mess for dinner.
- Holy Mass on Sundays, evening mass on Mondays, other obligatory days and adoration on Thursdays are compulsory for all Catholic students.



- Participation in the Holy Mass on week days is highly recommended.

GROUP STUDY

Group study and discussions with other room inmates have to be done in the common place. This is permitted only up to 11 pm. After that permission should be taken from the warden.

MODESTY AND DECORUM

Rule of modesty and decorum in dress code, appearance, and behaviour has to be strictly adhered to.

- Dress code - For girls, churidars of length below the knee is permitted and for boys Pants and three-fourths with suitable top wears are permitted (lungies and dhotis are not permitted).
- Appearance - Professional etiquettes (Clean shaven, decent hairstyle etc) must be followed.
- Study Time and other time schedules: Working Days: 6.30 am to 8.00 am; 6.30 pm to 7 pm; 8 pm onwards : Sundays and other holidays: 7 am to 8 am; 9 am to 10.00 am; 6.30 pm to 7 pm, 8 pm onwards

Use of Electricity and Water: Electricity and water should be used in a moderate way. Use of any articles which are consuming electricity other than light and fans are strictly prohibited.

OUTING

Outing is allowed for boys on Sundays and public holidays after 10 am. But all should enter into the hostel before 6 pm. Visiting of houses and persons without permission is not allowed. Besides the above mentioned days, Monday, Wednesday, and Friday after class, shopping is allowed to boys. For girls outing and shopping will be arranged occasionally.

USE OF INTOXICATING ARTICLES

Use of intoxicating articles in every sense is strictly prohibited. Violation of this rule will be punished with dismissal from the hostel and even from the college.

RAGGING

Ragging and other indecent behavior will be punished with dismissal both from college and hostel, and the matter will be reported to the Police authority for further action.

USE OF MOBILE PHONES & LAPTOPS

Responsible and restricted use is recommended.

USE OF GATE PASS

Students must keep hostel gate pass record with them while going out of the hostel and it has to be returned immediately to the hostel warden after the arrival. Students must keep the incoming and outgoing time mentioned in the gate pass. Any change should be reported to the warden well in advance. The gate pass and leave form should be duly filled and signed by the persons mentioned in the same.

HOSTEL VACATION

The official vacations given to the college during Onam, Christmas, Easter and semester holidays will be applicable to the Hostel.

GOING HOME ON WEEKENDS AND OTHER HOLIDAYS



Hostel inmates are allowed to go home only during vacation and public holidays. If anybody wants to go home every week end and other casual holidays in between, prior written request from the parents is necessary. Once permission is granted, these students cannot remain in the hostel without the permission of the warden.

STUDY HOLIDAYS

During study holidays the students are allowed to remain in the hostel. If anybody wants to go home they are allowed. But they can return to the hostel only on the previous day of the examination.

ENTRY TO OTHER ROOM

Allowing others (both hostlers and outsiders) to enter in your room is strictly forbidden. Each one should use only the room and bed allotted. Violation of this will be considered .

PERSONAL BELONGINGS

Hostel authorities are not responsible for the safe keeping of student's personal belongings.

STAY OUTSIDE WITHOUT PERMISSION

Hostel inmates are not permitted to stay outside the hostel. Violation of this will be seriously considered even with dismissal.

Play Time: 4.30pm to 6.00pm

STAY BACK IN THE HOSTEL

During college working hours, nobody is allowed to remain in the hostel, without the permission of the warden. On college working days, students should leave the hostel by 8.30 am.

COMMON NORMS

- Executive Director will be the sole authority to explain, to amend and to interpret these rules.
- Hostel authorities are not responsible for any casualties that may happen to the students during their stay in the hostel.
- Utilize the bank and ATM facilities in the campus and avoid slack money.
- Transactions from outsiders (including day scholars) either in money or in kind are allowed only with the prior permission of the warden.
- Appropriate penalties including dismissal, suspension, fines will be imposed for any damage done to the hostel property and for the violation of hostel rules.



31. SAHRDAYA ANTHEM

Sahrdaya soar high, soar high! Alma mater! Lift up thy banner,
Enfold thy offsprings,
Lead us O beacon!
Unto the land of true light Showers of grace, Blossoms of peace,
Flow from thy bosom of love.
Mould us as leaders In days to dawn
To guide the wandering flock!
Valiant youth, Daring to win,
Uplifting downtrodden lot.
Fill us in the skills Wisdom and values
To guide the wandering flock! Sahrdaya! Soar high, soar high! Alma mater!
Lift up thy banner, Unto the realm of stars,
Unto the heaven of bliss, Unto the land of true light.



SAHRDAYA

COLLEGE OF ENGINEERING & TECHNOLOGY

WARNING AGAINST RAGGING

As per the directions of the Honourable Supreme Court of India, “Ragging is a criminal offence and it is totally banned and anyone found guilty of Ragging and/or abetting Ragging is liable to be severely punished”.

Ragging in any form is strictly prohibited inside and outside this campus.

Contact No : 9446229344

Mail id : antiraggingsah@sahrdaya.ac.in

Join Hands to make your campus Ragging free

GENERAL INFORMATION

Contact No : 04802759275

Mail ID : info@sahrdaya.ac.in

GRIEVANCE REDRESSAL

Contact No : 7025591110

Mail ID : studgrievsah@sahrdaya.ac.in

INTERNAL COMPALINTS

Contact No : 7025591110

Mail ID : intcomsah@sahrdaya.ac.in



SAHRDAYA COLLEGE OF ENGINEERING & TECHNOLOGY

Kodakara - Thrissur - 680684

NAAC Accredited ; ISO 9001 : 2015 Certified Affiliated to :

University of Calicut /

Kerala Technological University Approved by AICTE,

Accredited by The Institution of Engineers (India)

OFFICIAL ADDRESS

Kodakara, P.B.No.17,

Thrissur (Dt), Pin 680684, Kerala State, India Ph: 0480-2726630 (8 Lines), 2759275.

Fax No.: 0480-2726634

Email: info.sahrdaya@gmail.com, info@sahrdaya.ac.in Website: www.sahrdaya.ac.in